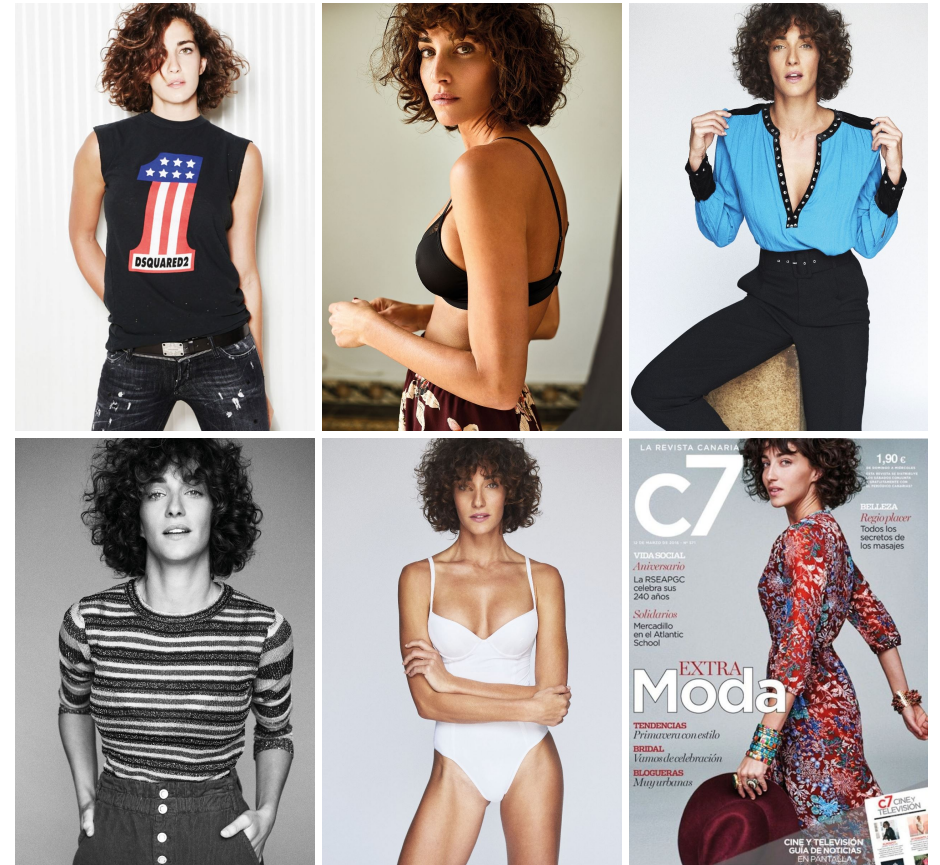




LAURA OJEDA



LAURA OJEDA

GRÖSSE 176 OBERWEITE 90
TAILLE 64 HÜFTE 90
SCHUHE 39 HAARE BRAUN
AUGEN BRAUN-GRÜN

HEIGHT 5' 9" BUST 35"
WAIST 25" HIPS 35"
SHOES 7.5 HAIR BROWN
EYES HAZEL

Hamburg +49 40 413 236 - 0 Berlin +49 30 616 606 - 6
www.m4models.de