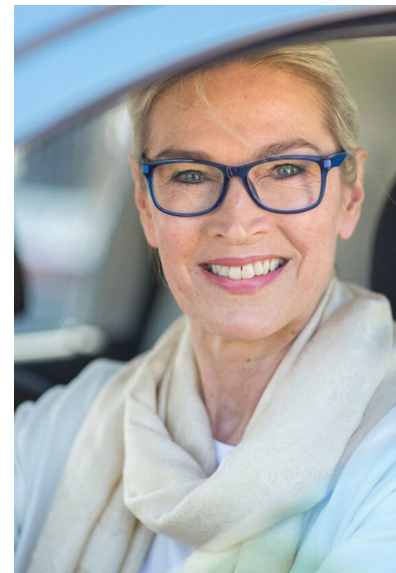
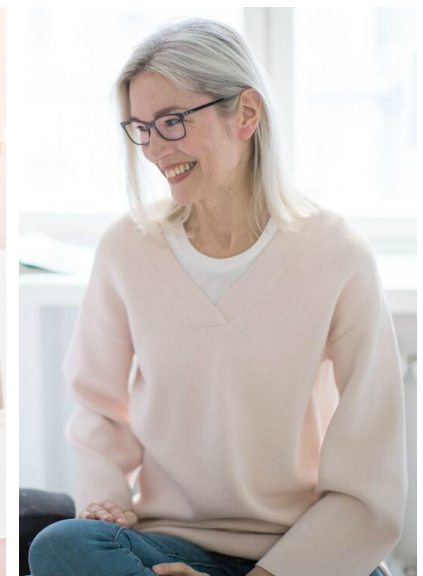
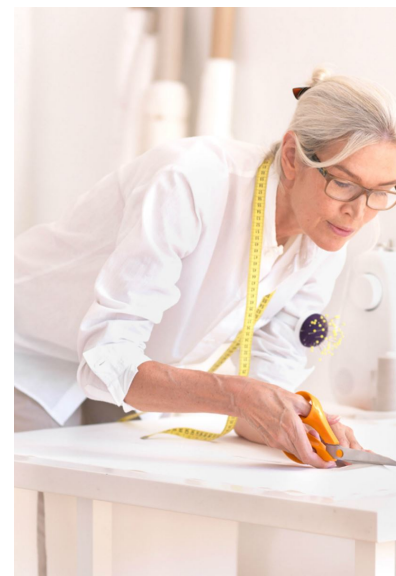




ANNE-MARIA



ANNE-MARIA

GRÖSSE 179 OBERWEITE 88  
TAILLE 64 HÜFTE 92  
SCHUHE 39 HAARE GREY  
AUGEN BLAU-GRAU

HEIGHT 5' 10.5" BUST 35"  
WAIST 25" HIPS 36"  
SHOES 8 HAIR GREY  
EYES BLUE-GREY