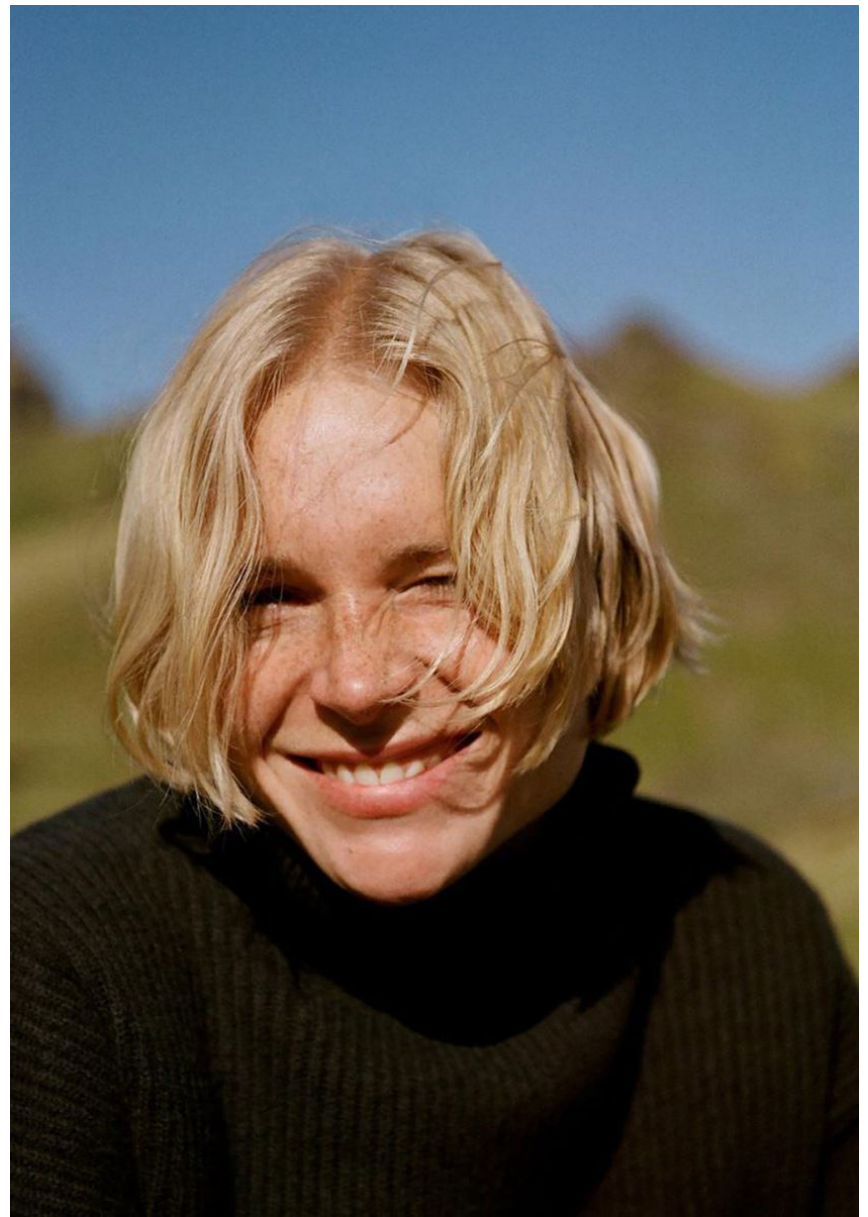


Mannequins : Georgia @IMG, Steinburg @FORD, Evva @SULLA, Adèle @FORD, Chloé @SUL, Mia @VIVA, Anna @MY AGENCY. — Hans @SILENT, Mergine @VIVA, Steffi @SILENT, Ian @THE FACE. — Assistants du photographe : Daie Curtis, avec David Mannion, Mickael Bambi et Paul Jeddaal. — Assistants de la styliste : Charlotte Thommeret, Livia Rossi, Yann Steiner, Carla Buttar et Ange Hiraat. — Coiffure : Duffy @STREETERS — Maquillage : Lucia Pensioli @STREETERS avec Raf Romagnoli et Kana Nagashima. — Manucure : Cam Tran @ARTLIST. — Casting : Piergiorgio Del Moro @DM CASTING. — Scénographe : Vincent Olivier, avec Samuele Facci et Antoine Aubouin. — Production : @BARTNER FILMS, @AP STUDIO.



STEFFI COOK



STEFFI COOK

GRÖSSE **178** OBERWEITE **80**
TAILLE **60** HÜFTE **89**
SCHUHE **40** HAARE **BLOND**
AUGEN **BLAU**



Hamburg +49 40 413 236 - 0 Berlin +49 30 616 606 - 6
www.m4models.de

HEIGHT **5' 10"** BUST **31"**
WAIST **23"** HIPS **35"**
SHOES **8.5** HAIR **BLONDE**
EYES **BLUE**



Renacimiento



Chaqueta con capucha, pantalones anchos y botines planos, todo de terciopelo, de EMPORIO ARMANI.

130

STEFFI COOK

GRÖSSE **178** OBERWEITE **80**
TAILLE **60** HÜFTE **89**
SCHUHE **40** HAARE **BLOND**
AUGEN **BLAU**



Hamburg +49 40 413 236 - 0 Berlin +49 30 616 606 - 6
www.m4models.de

HEIGHT **5' 10"** BUST **31"**
WAIST **23"** HIPS **35"**
SHOES **8.5** HAIR **BLONDE**
EYES **BLUE**

En 1988 apareció el primer número de 'Emporio Armani Magazine', una publicación en la que, durante más de 30 años, colaboraron los mejores fotógrafos del mundo y que forjó el estilo sobre el que Giorgio Armani construyó su imperio. Una visionaria apuesta que inspira este sentido homenaje a su legado.

Fotografía de *Javier Biosca* Estilismo de *Beatriz Machado*



Vestido de terciopelo con escote en palabra de honor de **ETRO** y abanicos de plumas de **OLIVIER BERNOUX**.

131

STEFFI COOK

GRÖSSE **178** OBERWEITE **80**
 TAILLE **60** HÜFTE **89**
 SCHUHE **40** HAARE **BLOND**
 AUGEN **BLAU**



Hamburg +49 40 413 236 - 0 Berlin +49 30 616 606 - 6
www.m4models.de



Casaco: **7 MONCLER FRAGMENT HIROSHI FUJIWARA**. Casaco (no braço), camisola e calções, tudo **1 MONCLER JW ANDERSON**.

Na página ao lado: vestido: **DARCEY FLEMING**.

Fotografia: Alex de Mora @ DMB Represents. Styling: Tessa Yopp @ Monday Artists. Modelo: Steffi Cook @ Select Model.

Cabelos: Liam Russell @ Julian Watson Agency com produtos Oribe e ghd Professional.

Maquilhagem: Mary-Jane Gottdoc com produtos Giorgio Armani Beauty.

Produção: James Warren @ Motherland e Ksenia Maximova @ DMB Represents. Set design: Amy Friend.

Costing: Anna Kozakova. Retouch: Nolik studios. Assistentes de fotografia: Filip Skiba e Ella Pavlides.

Assistente de styling: Sophie Gabbay. Assistente de set design: Sammie Sperring. Editorial realizado em exclusivo para a Vogue Portugal.



Fashion film



STEFFI COOK

GRÖSSE **178** OBERWEITE **80**
 TAILLE **60** HÜFTE **89**
 SCHUHE **40** HAARE **BLOND**
 AUGEN **BLAU**

M
 MODELS

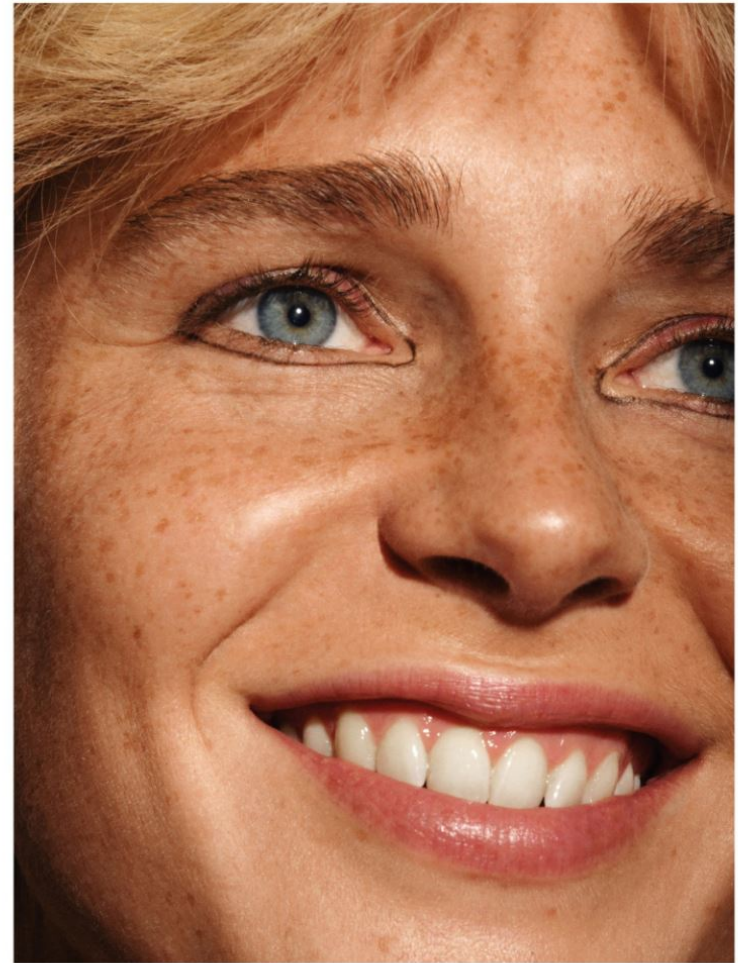
Hamburg +49 40 413 236 - 0 Berlin +49 30 616 606 - 6
www.m4models.de

HEIGHT **5' 10"** BUST **31"**
 WAIST **23"** HIPS **35"**
 SHOES **8.5** HAIR **BLONDE**
 EYES **BLUE**



This page:
coat, bag and shoes,
all Prada.
Tights, Folke.
Opposite page:
top, jeans and bag,
all Valentino.

130



Το μακιγιάζ έγινε με προϊόντα *Maybelline*: Hyper Easy Liquid Eyeliner, πολύβλε φρυγίων New York Tattoo Brow 36H.

130 | Νοέμβριος 2021

STEFFI COOK

GRÖSSE **178** OBERWEITE **80**
TAILLE **60** HÜFTE **89**
SCHUHE **40** HAARE **BLOND**
AUGEN **BLAU**



Hamburg +49 40 413 236 - 0 Berlin +49 30 616 606 - 6
www.m4models.de

HEIGHT **5' 10"** BUST **31"**
WAIST **23"** HIPS **35"**
SHOES **8.5** HAIR **BLONDE**
EYES **BLUE**



Blazer de sarga de lana y body-camisa de algodón troquelado y bordado, ambos de ALAÏA; bermudas sastrero y tocado, ambos de GUCCI; mocasines Pembrey de piel de CHURCH'S, y calcetines de modal de CONDOR.

134

STEFFI COOK

GRÖSSE **178** OBERWEITE **80**
TAILLE **60** HÜFTE **89**
SCHUHE **40** HAARE **BLOND**
AUGEN **BLAU**

M
MODELS

Hamburg +49 40 413 236 - 0 Berlin +49 30 616 606 - 6
www.m4models.de

HEIGHT **5' 10"** BUST **31"**
WAIST **23"** HIPS **35"**
SHOES **8.5** HAIR **BLONDE**
EYES **BLUE**



Chaqueta, falda y shorts, todo de tweed, medias con motivo doble C y gafas con correa de perlas, todo de CHANEL.

En la otra pág., abrigo sastre de mezcla de lana reciclada de HERNO, camisa de algodón de MIRTO, falda de organza de NINA RICCI, corbata de seda de HERMÈS, boina de lana de BOINAS ELOSEGÜI, calcetines de modal de CÓNDR y zapatos Burwood Met de cuero con tachuelas de CHURCH'S.

133



Kenzo top, skirt and hat

109/280

STEFFI COOK

GRÖSSE **178** OBERWEITE **80**
 TAILLE **60** HÜFTE **89**
 SCHUHE **40** HAARE **BLOND**
 AUGEN **BLAU**



Hamburg +49 40 413 236 - 0 Berlin +49 30 616 606 - 6
www.m4models.de

HEIGHT **5' 10"** BUST **31"**
 WAIST **23"** HIPS **35"**
 SHOES **8.5** HAIR **BLONDE**
 EYES **BLUE**

LOVE WANT

ISSUE 28 featuring STEFFI COOK Photographed by Jennifer Livingston

REAL DREAMS



STEFFI COOK

GRÖSSE **178** OBERWEITE **80**
TAILLE **60** HÜFTE **89**
SCHUHE **40** HAARE **BLOND**
AUGEN **BLAU**

M
MODELS

Hamburg +49 40 413 236 - 0 Berlin +49 30 616 606 - 6
www.m4models.de

HEIGHT **5' 10"** BUST **31"**
WAIST **23"** HIPS **35"**
SHOES **8.5** HAIR **BLONDE**
EYES **BLUE**



GRÖSSE **178** OBERWEITE **80**
TAILLE **60** HÜFTE **89**
SCHUHE **40** HAARE **BLOND**
AUGEN **BLAU**

STEFFI COOK



Hamburg +49 40 413 236 - 0 Berlin +49 30 616 606 - 6
www.m4models.de



HEIGHT **5' 10"** BUST **31"**
WAIST **23"** HIPS **35"**
SHOES **8.5** HAIR **BLONDE**
EYES **BLUE**



STEFFI COOK

GRÖSSE **178** OBERWEITE **80**
TAILLE **60** HÜFTE **89**
SCHUHE **40** HAARE **BLOND**
AUGEN **BLAU**

M
MODELS

HEIGHT **5' 10"** BUST **31"**
WAIST **23"** HIPS **35"**
SHOES **8.5** HAIR **BLONDE**
EYES **BLUE**

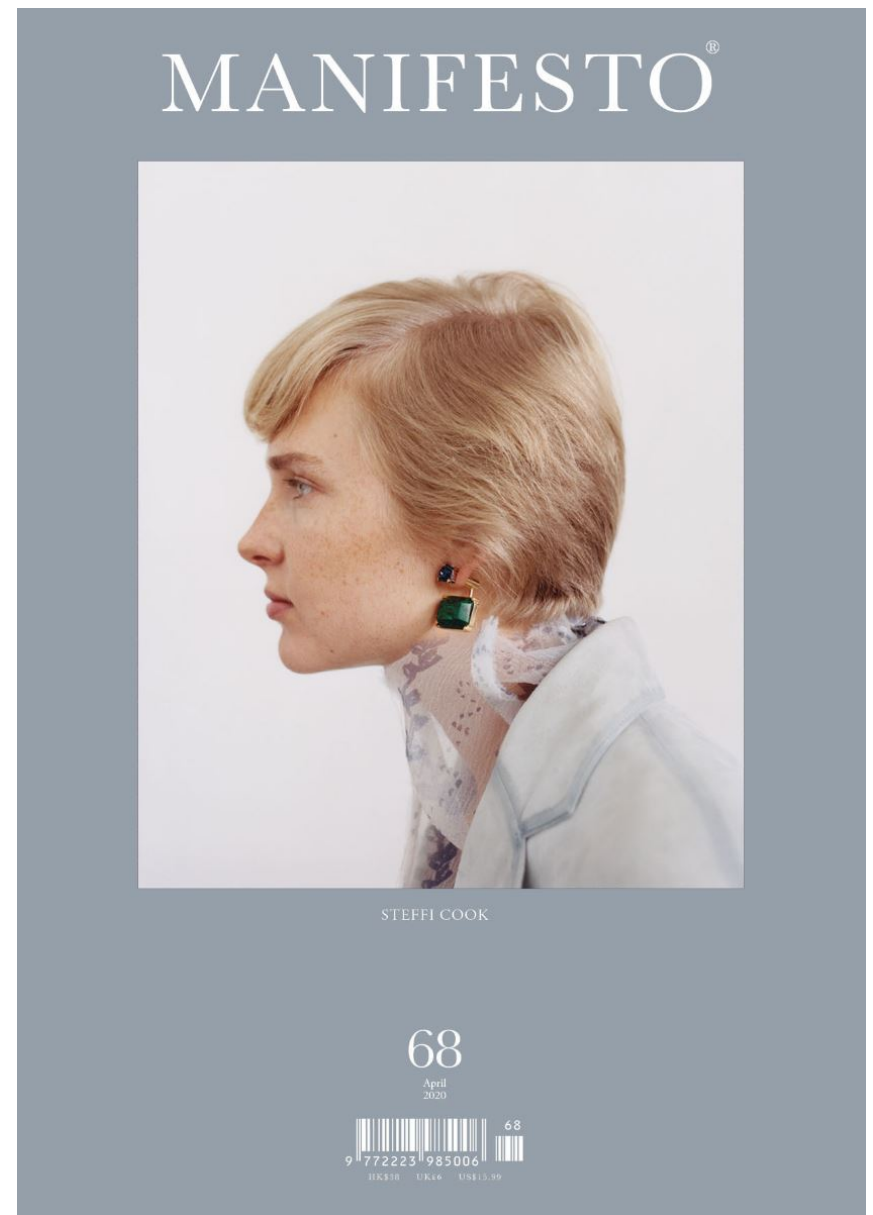
Hamburg +49 40 413 236 - 0 Berlin +49 30 616 606 - 6
www.m4models.de



Zdjęcia **Brendan Freeman**
 Stylizacja **Rachel Bakewell**
 Makijaż **Takenaka**
 Włosy **Tom Roppongi / Julian Watson**
 kosmetykami **Leonor Greyl**
 Asystenci fotografa **Kristos Glourgas,**
Jed Barnes
 Asystentki stylistki **Tshia Suleyman**
 Casting **Marina Fairfax**
 Modelka **Steffi Cook / Select Models**
 Produkcja **Rosie Cartwright**

Podziękowania dla **Labyrinth**
 Photographic.

Na tej stronie:
 Sukienka, pasek i rajstopy
DOLCE & GABBANA
 Na stronie obok:
 Sukienka, naszyjnik i buty, całość
ALEXANDER MCQUEEN



MANIFESTO®

STEFFI COOK

68

April
 2020



STEFFI COOK

GRÖSSE **178** OBERWEITE **80**
 TAILLE **60** HÜFTE **89**
 SCHUHE **40** HAARE **BLOND**
 AUGEN **BLAU**



Hamburg +49 40 413 236 - 0 Berlin +49 30 616 606 - 6
www.m4models.de

HEIGHT **5' 10"** BUST **31"**
 WAIST **23"** HIPS **35"**
 SHOES **8.5** HAIR **BLONDE**
 EYES **BLUE**



Pettinature Pier Paolo Lai
 Make-up Luciano Chiarello per Nars
 Modella Steffi Cook @Monster
 Assistenti fotografo Andrea e Alessandro Biancofiore
 Assistente stylist Federica Reali

Giubbino waterproof, Herno. Felpa, Polo Ralph Lauren. Shorts, Ralph Lauren RLX. Bracciali, Patou. Pagina accanto, Giacca con dettagli di pelle e borsa, Tod's. T-shirt, Falconeri. Reggisenò, Genny. Pantaloni di soûde, Ermanno Scervino. Cinture stretch, Orciani; di pelle, Church's. Scarpe, Miu Miu.



Lungo abito di seta, Balenciaga. Slingback di pelle, Miu Miu. Pagina accanto, Bomber, camicia e shorts di seta, tutto Valentino. Cintura, Cavalli&Nastri. In tutto il servizio: calze, Wolford; sandali di pelle, Church's.

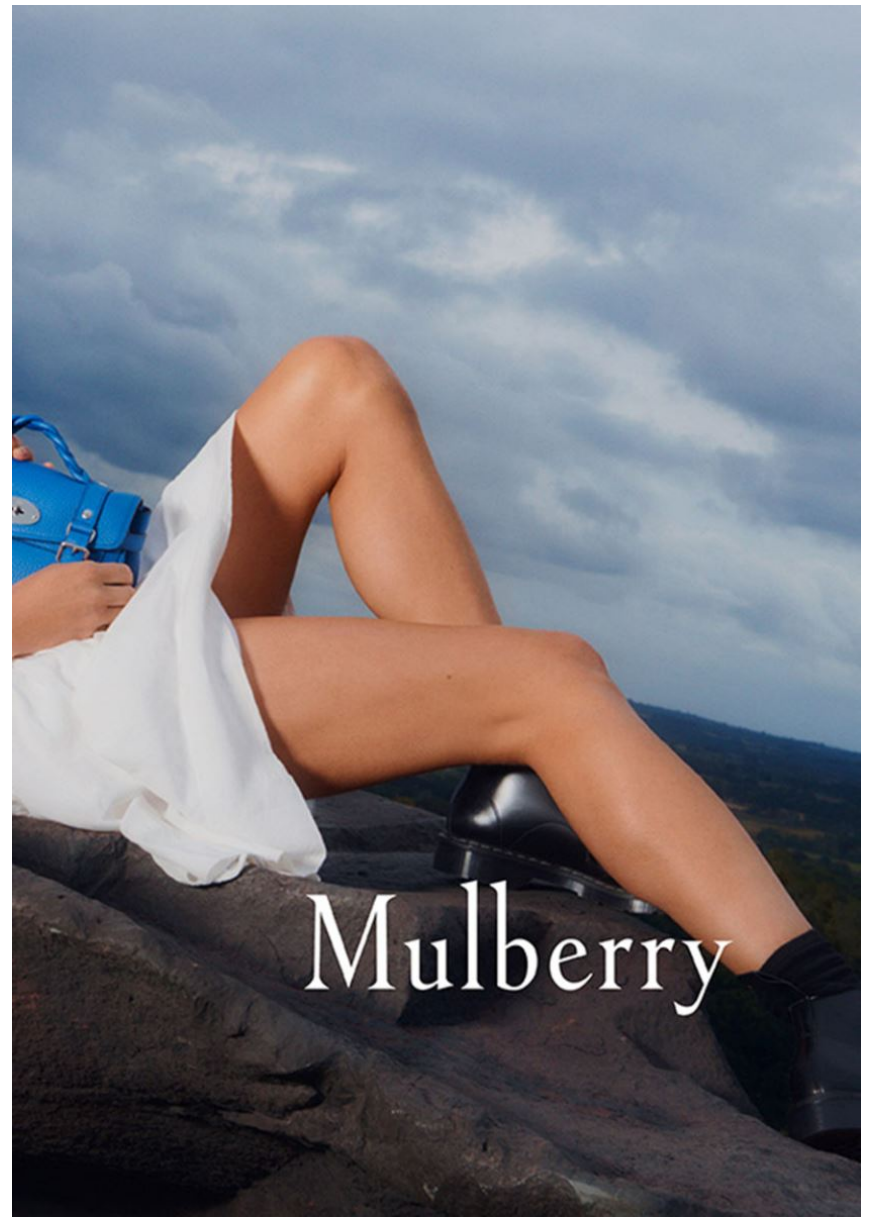
STEFFI COOK

GRÖSSE **178** OBERWEITE **80**
 TAILLE **60** HÜFTE **89**
 SCHUHE **40** HAARE **BLOND**
 AUGEN **BLAU**



Hamburg +49 40 413 236 - 0 Berlin +49 30 616 606 - 6
www.m4models.de

HEIGHT **5' 10"** BUST **31"**
 WAIST **23"** HIPS **35"**
 SHOES **8.5** HAIR **BLONDE**
 EYES **BLUE**



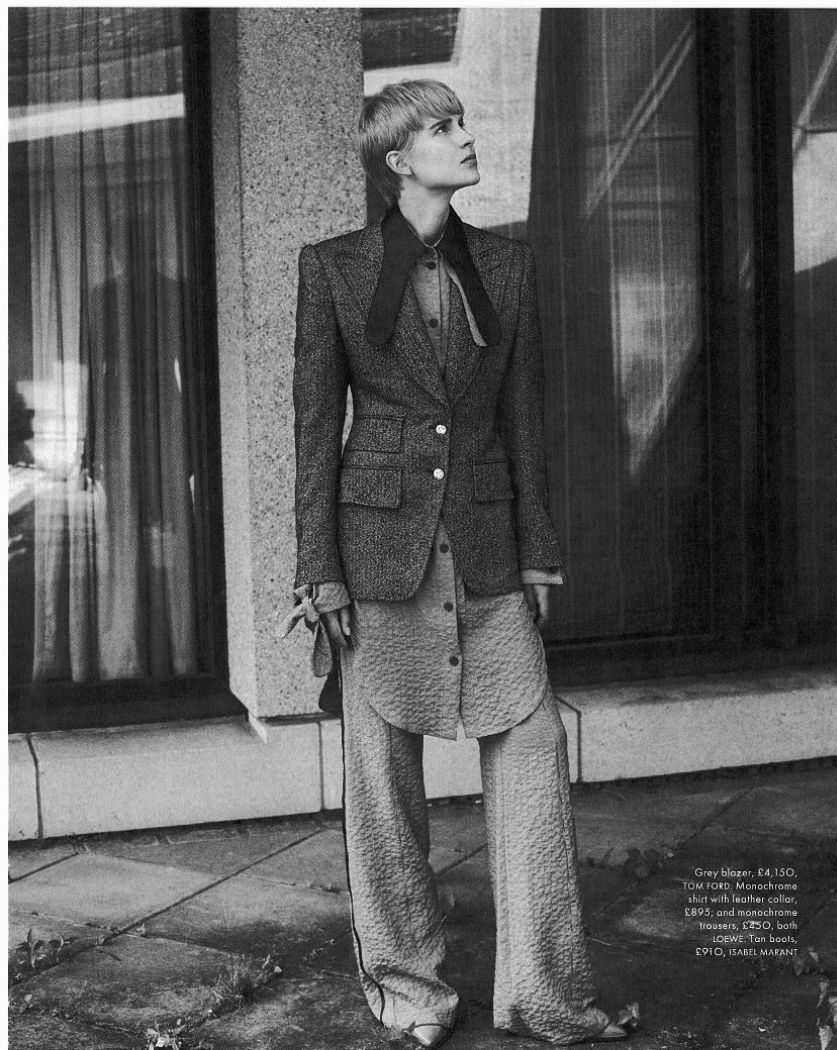
STEFFI COOK

GRÖSSE **178** OBERWEITE **80**
TAILLE **60** HÜFTE **89**
SCHUHE **40** HAARE **BLOND**
AUGEN **BLAU**



Hamburg +49 40 413 236 - 0 Berlin +49 30 616 606 - 6
www.m4models.de

HEIGHT **5' 10"** BUST **31"**
WAIST **23"** HIPS **35"**
SHOES **8.5** HAIR **BLONDE**
EYES **BLUE**



Grey blazer, £4,150,
TOM FORD. Monochrome
shirt with leather collar,
£895, and monochrome
trousers, £290, both
LOEWE. Tan boots,
£910, ISABEL MARANT

ALEX FRANCO



Maroon jumper (worn
over shoulders), £670;
brown and red jacket,
£1,770; blue shirt,
£580; and brown and
red trousers, £610, all
GUCCI. White shirt
(worn underneath),
£140; P. C. Black
shoes, £695,
NICHOLAS KIRKWOOD

ALEX FRANCO

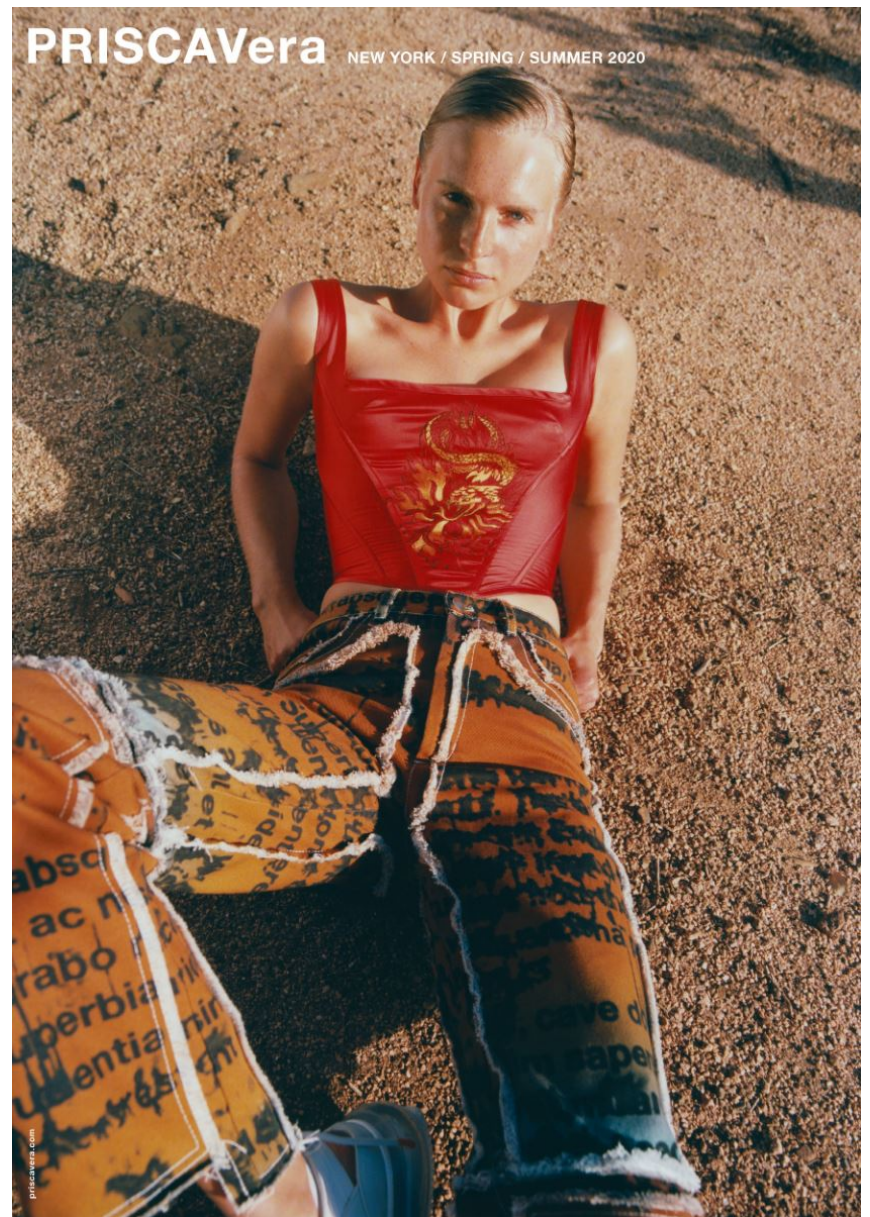
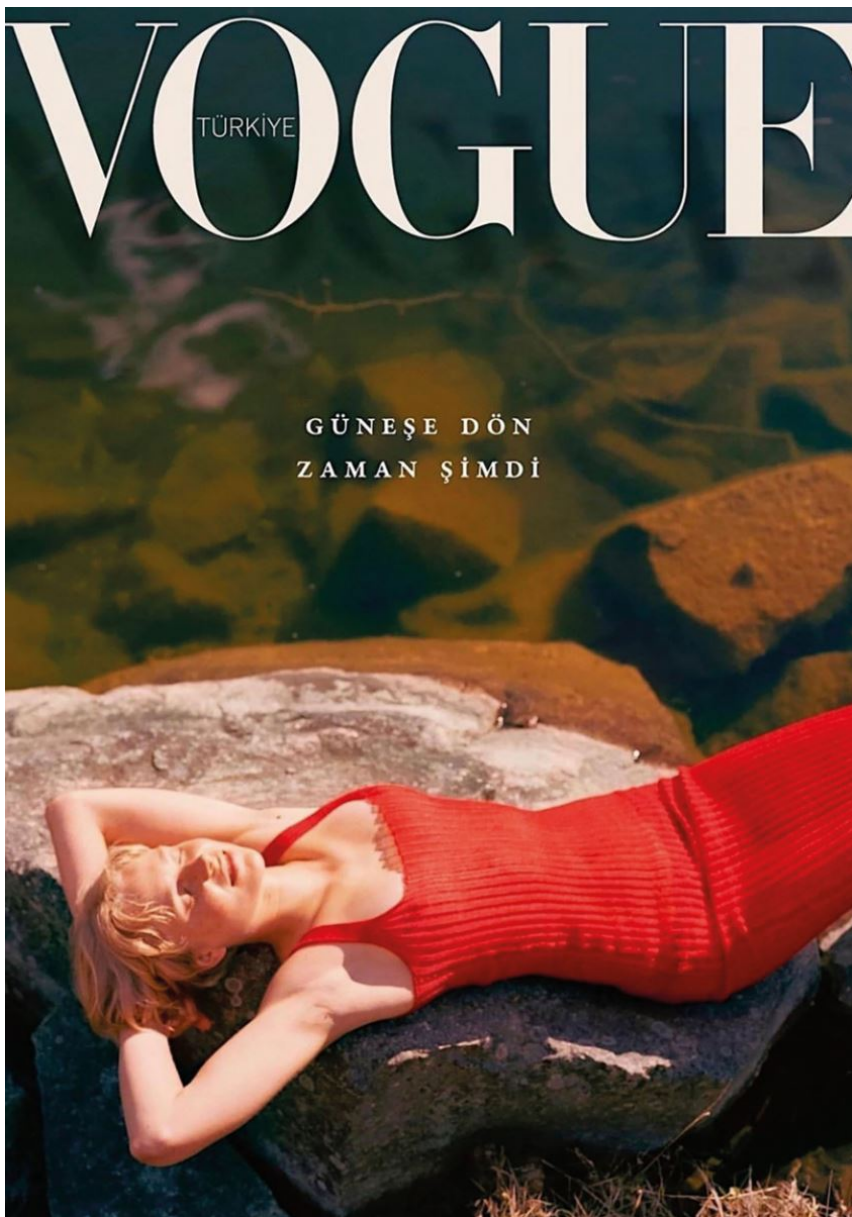
STEFFI COOK

GRÖSSE **178** OBERWEITE **80**
TAILLE **60** HÜFTE **89**
SCHUHE **40** HAARE **BLOND**
AUGEN **BLAU**

M
MODELS

HEIGHT **5' 10"** BUST **31"**
WAIST **23"** HIPS **35"**
SHOES **8.5** HAIR **BLONDE**
EYES **BLUE**

Hamburg +49 40 413 236 - 0 Berlin +49 30 616 606 - 6
www.m4models.de



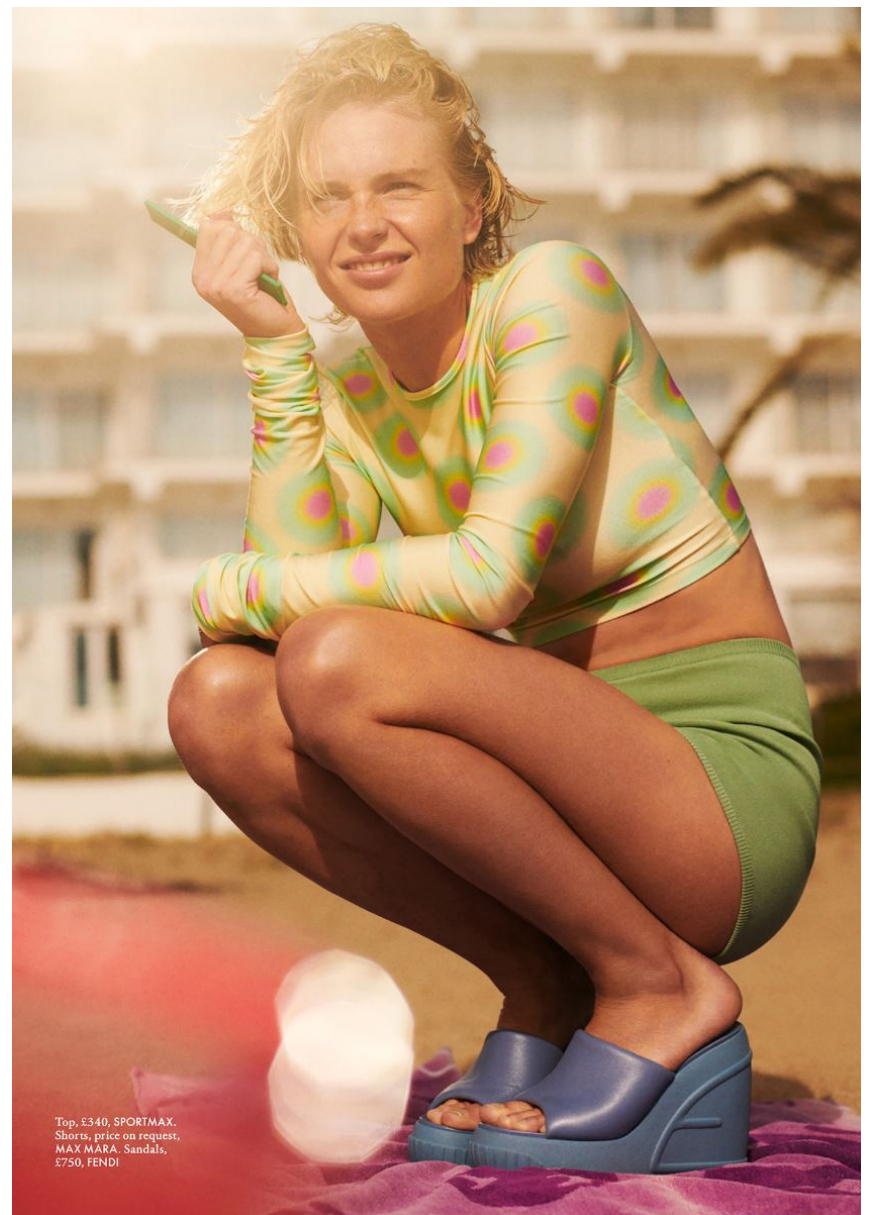
STEFFI COOK

GRÖSSE **178** OBERWEITE **80**
TAILLE **60** HÜFTE **89**
SCHUHE **40** HAARE **BLOND**
AUGEN **BLAU**

M
MODELS

Hamburg +49 40 413 236 - 0 Berlin +49 30 616 606 - 6
www.m4models.de

HEIGHT **5' 10"** BUST **31"**
WAIST **23"** HIPS **35"**
SHOES **8.5** HAIR **BLONDE**
EYES **BLUE**



STEFFI COOK

GRÖSSE **178** OBERWEITE **80**
TAILLE **60** HÜFTE **89**
SCHUHE **40** HAARE **BLOND**
AUGEN **BLAU**

M
MODELS

HEIGHT **5' 10"** BUST **31"**
WAIST **23"** HIPS **35"**
SHOES **8.5** HAIR **BLONDE**
EYES **BLUE**

Hamburg +49 40 413 236 - 0 Berlin +49 30 616 606 - 6
www.m4models.de



COMFILATION
DI LOOK COSÌ
FORTI DA VALERE,
CIASCUNO,
UN HASHTAG
NEL FEED
DELLE TENDENZE
PER LA P/E 2022.
DAI NEW NINETIES
AL FREPPY,
DAL RITORNO
DEI BIJOUX
AL MASCHILE,
DALLA LINGUERE
A VISTA AL DENIM.
FASHION
SOCIAL CLUB

di LAURA SEGANTI
foto XAVI GORDO

Giacca di denim jeans coordinati
con pietre multicolore e borchie,
Dolce&Gabbana, come il reggiseno
di stretch satin con dettagli di pizzo,
gli slip con elastico logato, la borsa
Dolce Box di metallo con pietre
colorate e la shoulder bag di pelle
laminata con targa effetto specchio.

Nella pagina accanto
Giacca tuxedo cropped di satin
e pantaloni coordinati con
pinnocci, tutto Fendi, come
gli occhiali da sole con montatura
di metallo dorato, gli orecchini
di metallo dorato e plexi Fendi
O'Lock, la minibag di pelle con
lettering Fondigrady, la Baguette con
perline multicolore e illustrazione
di Antonio Lopez, i sandali di pitone
con tacco scultura Fendi First.



Giubbotto di pelle, pullover di cashmere,
gonna di satin double su shorts
di poliestere jacquard, tutto Prada, come
la borsa di pelle spazzolata
e le slingback con zeppa asimmetrica.

Nella pagina accanto
Giacca gessata di lana e cotone, maxi
gonna di denim, tutto Dequard2,
reggiseno a balconcino Jardin d'Amour
Intimissimi (29,90 euro).

STEFFI COOK

GRÖSSE **178** OBERWEITE **80**
TAILLE **60** HÜFTE **89**
SCHUHE **40** HAARE **BLOND**
AUGEN **BLAU**

M
MODELS

HEIGHT **5' 10"** BUST **31"**
WAIST **23"** HIPS **35"**
SHOES **8.5** HAIR **BLONDE**
EYES **BLUE**

Hamburg +49 40 413 236 - 0 Berlin +49 30 616 606 - 6
www.m4models.de



Figure nr | 125



M&A von omdia,
Celine by Hedi
Slimane, *Zion* *Apina*
 und *opista* *Uso*,
Mergulter Paris.
 Το παλαιό *eye* με
npotova *Lancome*,
Prep & Hydrate
Primer, *Crayon*
Khol *No Ol Noir*,
L' Absolu Rouge La
Base Rosy.
 Στιν *antivretu*
ceAlie: *Depeja* und
Andree: *Louis Vuitton*.
 Στοι *Apina* und
opista *Uso*, *Mergulter*
Paris. Το παλαιό
eye με *npotova*
Shiseido, *Microliner*
Ink *No Ol Black*,
highlighter *Aura Dew*
Face, *Eyes*, *Lip* *No Ol*
Lunar.

STEFFI COOK

GRÖSSE **178** OBERWEITE **80**
 TAILLE **60** HÜFTE **89**
 SCHUHE **40** HAARE **BLOND**
 AUGEN **BLAU**



Hamburg +49 40 413 236 - 0 Berlin +49 30 616 606 - 6
www.m4models.de

HEIGHT **5' 10"** BUST **31"**
 WAIST **23"** HIPS **35"**
 SHOES **8.5** HAIR **BLONDE**
 EYES **BLUE**



GRÖSSE **178** OBERWEITE **80**
 TAILLE **60** HÜFTE **89**
 SCHUHE **40** HAARE **BLOND**
 AUGEN **BLAU**

STEFFI COOK



Hamburg +49 40 413 236 - 0 Berlin +49 30 616 606 - 6
www.m4models.de



Caban di lino cotone con inserti di pelle, cropped top di seta double face e mingonna coordinata, tutto *Hermès*, come i calzini di pelle e i sandali di pelle naturale con suola di gomma ultraleggera.
 Nella pagina accanto
 Top di jersey bicolori con logo e culotte di jersey a tinta, *Chanel*, come la borsa di pelle matelassé con dettagli di metallo dorato, la collana di metallo con charme la cintura di pelle con catena di metallo dorato.
 IDEA BEAUTY
 Pelle del corpo rigenerata e luminosa con *Sublimage La Crème*
 Corset *Decolleté* di *Chanel*.

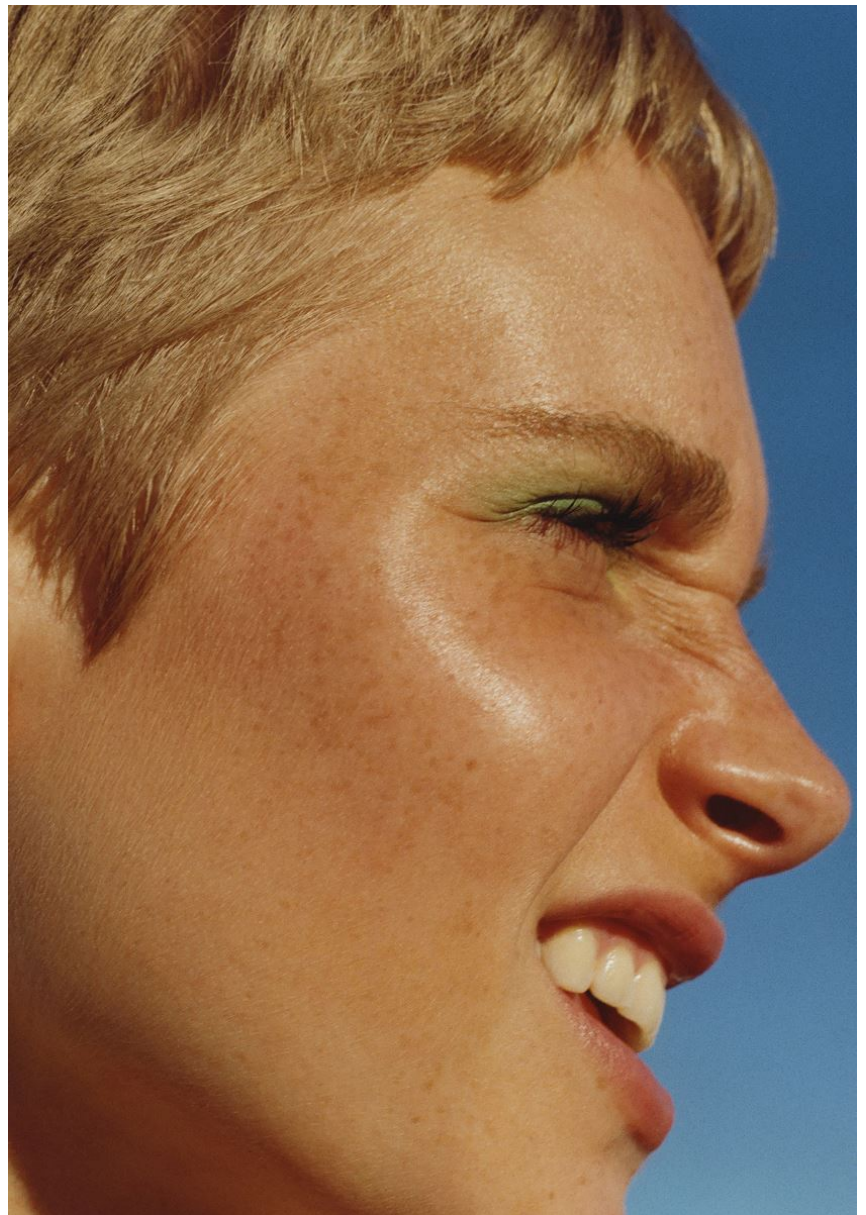
HEIGHT **5' 10"** BUST **31"**
 WAIST **23"** HIPS **35"**
 SHOES **8.5** HAIR **BLONDE**
 EYES **BLUE**



Fly me high, Ibiza sky

EN Ibiza CON FOTOGRAFÍA DE LAURA COULSON
Y ESTILISMO DE VICTOIRE SIMONNEY

Left: swimsuit DNUD, towel stylist's own



STEFFI COOK

GRÖSSE **178** OBERWEITE **80**
TAILLE **60** HÜFTE **89**
SCHUHE **40** HAARE **BLOND**
AUGEN **BLAU**



Hamburg +49 40 413 236 - 0 Berlin +49 30 616 606 - 6
www.m4models.de

HEIGHT **5' 10"** BUST **31"**
WAIST **23"** HIPS **35"**
SHOES **8.5** HAIR **BLONDE**
EYES **BLUE**



STEFFI COOK

GRÖSSE **178** OBERWEITE **80**
TAILLE **60** HÜFTE **89**
SCHUHE **40** HAARE **BLOND**
AUGEN **BLAU**



Hamburg +49 40 413 236 - 0 Berlin +49 30 616 606 - 6
www.m4models.de

HEIGHT **5' 10"** BUST **31"**
WAIST **23"** HIPS **35"**
SHOES **8.5** HAIR **BLONDE**
EYES **BLUE**