

MICHAEL R. KERSCHBAUMER





Just try telling an old serviceman that his leather flight jacket isn't "dorky" enough for an occasion — and who are we to argue? Sure, for these times when you're going for a slightly less "broke-bordered" look, the Ferragamo trench adds a touch of ease to the genre with its slim lines and softer, more supple leather trench coat, \$5,800; by Salvatore Ferragamo, khaki cashmere front button sweater, \$498, and khaki-colored cashmere scarf, \$258; belt by Gilded Apple, hazelnut-rind denim five-pocket jeans, \$172; by Gold Spinn, brown leather boots, \$275; by Hains of London.



...of the work you're doing. If you're a pilot, you'll want a jacket that's both functional and stylish. The Ferragamo bomber jacket is a great choice for this. It's made of a durable material and has a classic design. The khaki cashmere front button sweater is also a great choice. It's made of a soft material and has a classic design. The khaki-colored cashmere scarf is also a great choice. It's made of a soft material and has a classic design. The belt by Gilded Apple is also a great choice. It's made of a soft material and has a classic design. The denim five-pocket jeans are also a great choice. They're made of a soft material and have a classic design. The brown leather boots are also a great choice. They're made of a soft material and have a classic design. The Hains of London shoes are also a great choice. They're made of a soft material and have a classic design.

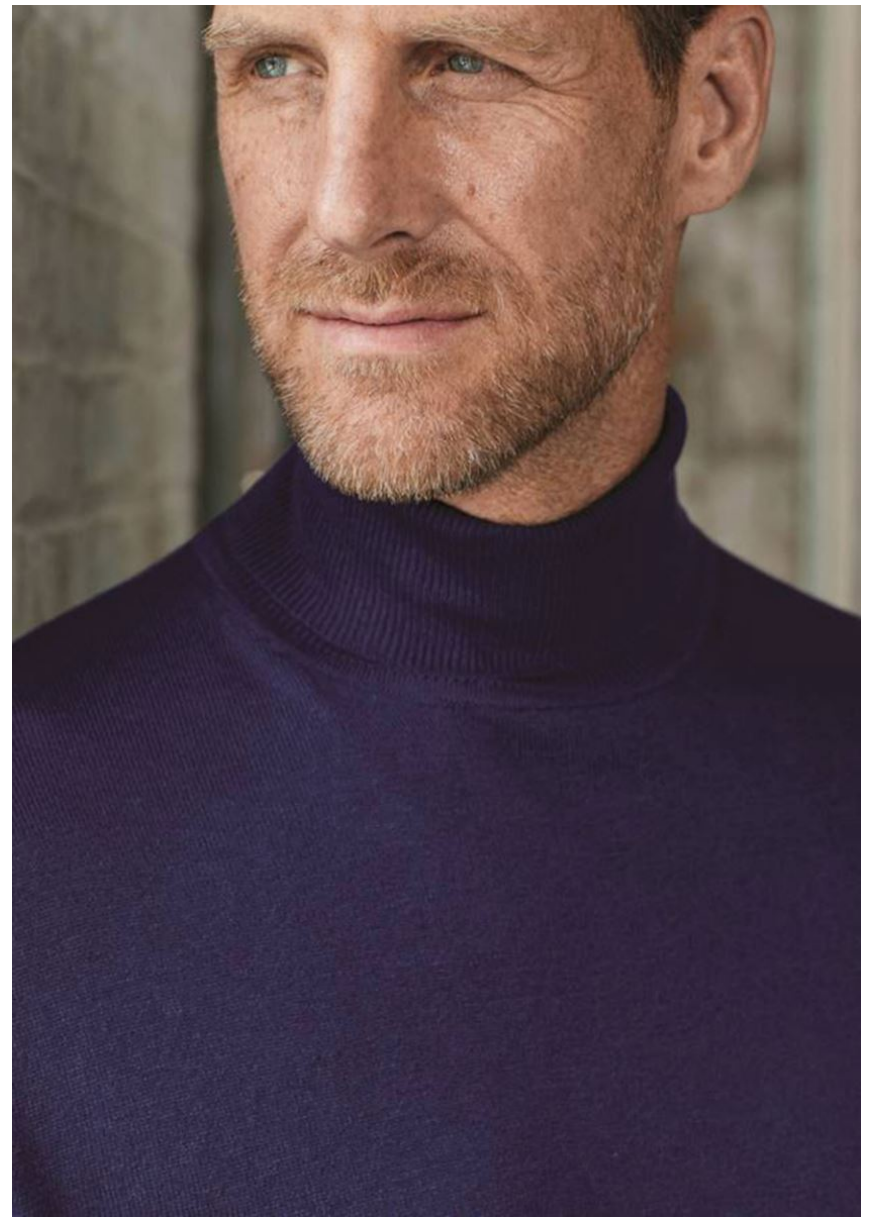
MICHAEL R. KERSCHBAUMER

GRÖSSE **185** OBERWEITE **100**
 TAILLE **84** HÜFTE **99**
 SCHUHE **45** HAARE **BLOND**
 AUGEN **BLAU**



Hamburg +49 40 413 236 - 0 Berlin +49 30 616 606 - 6
www.m4models.de

HEIGHT **6' 1"** BUST **39"**
 WAIST **33"** HIPS **39"**
 SHOES **12** HAIR **BLONDE**
 EYES **BLUE**



MICHAEL R. KERSCHBAUMER

GRÖSSE **185** OBERWEITE **100**
TAILLE **84** HÜFTE **99**
SCHUHE **45** HAARE **BLOND**
AUGEN **BLAU**



Hamburg +49 40 413 236 - 0 Berlin +49 30 616 606 - 6
www.m4models.de

HEIGHT **6' 1"** BUST **39"**
WAIST **33"** HIPS **39"**
SHOES **12** HAIR **BLONDE**
EYES **BLUE**



MICHAEL R. KERSCHBAUMER

GRÖSSE **185** OBERWEITE **100**
TAILLE **84** HÜFTE **99**
SCHUHE **45** HAARE **BLOND**
AUGEN **BLAU**



Hamburg +49 40 413 236 - 0 Berlin +49 30 616 606 - 6
www.m4models.de

HEIGHT **6' 1"** BUST **39"**
WAIST **33"** HIPS **39"**
SHOES **12** HAIR **BLONDE**
EYES **BLUE**



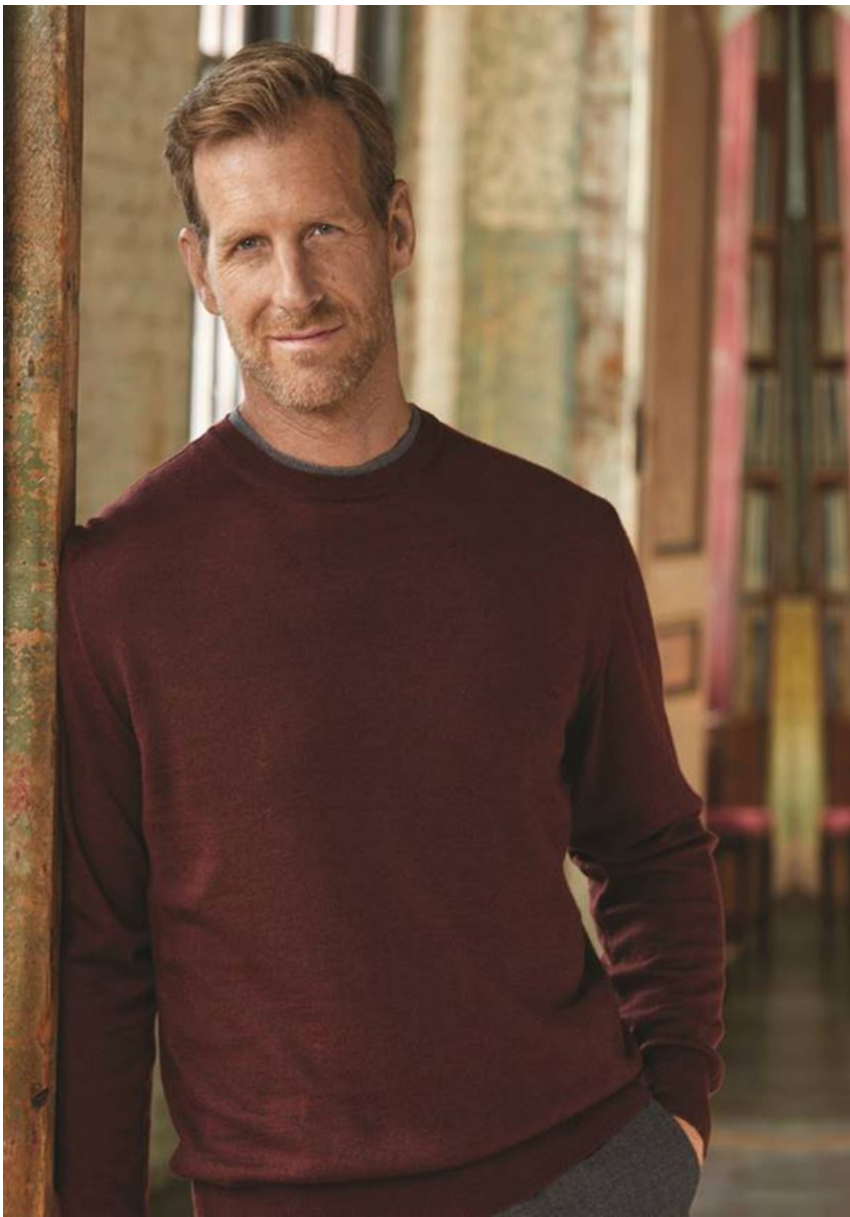
MICHAEL R. KERSCHBAUMER

GRÖSSE **185** OBERWEITE **100**
TAILLE **84** HÜFTE **99**
SCHUHE **45** HAARE **BLOND**
AUGEN **BLAU**



Hamburg +49 40 413 236 - 0 Berlin +49 30 616 606 - 6
www.m4models.de

HEIGHT **6' 1"** BUST **39"**
WAIST **33"** HIPS **39"**
SHOES **12** HAIR **BLONDE**
EYES **BLUE**



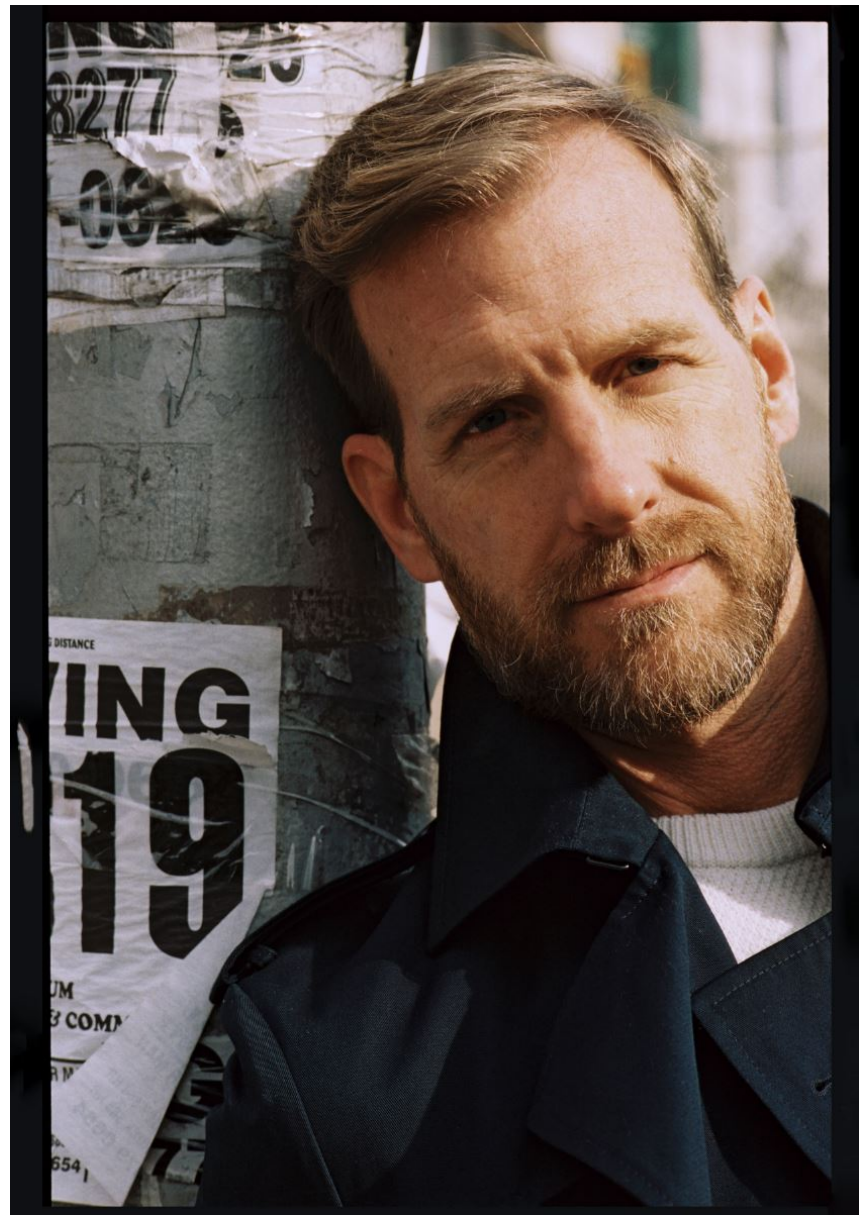
MICHAEL R. KERSCHBAUMER

GRÖSSE **185** OBERWEITE **100**
TAILLE **84** HÜFTE **99**
SCHUHE **45** HAARE **BLOND**
AUGEN **BLAU**



Hamburg +49 40 413 236 - 0 Berlin +49 30 616 606 - 6
www.m4models.de

HEIGHT **6' 1"** BUST **39"**
WAIST **33"** HIPS **39"**
SHOES **12** HAIR **BLONDE**
EYES **BLUE**



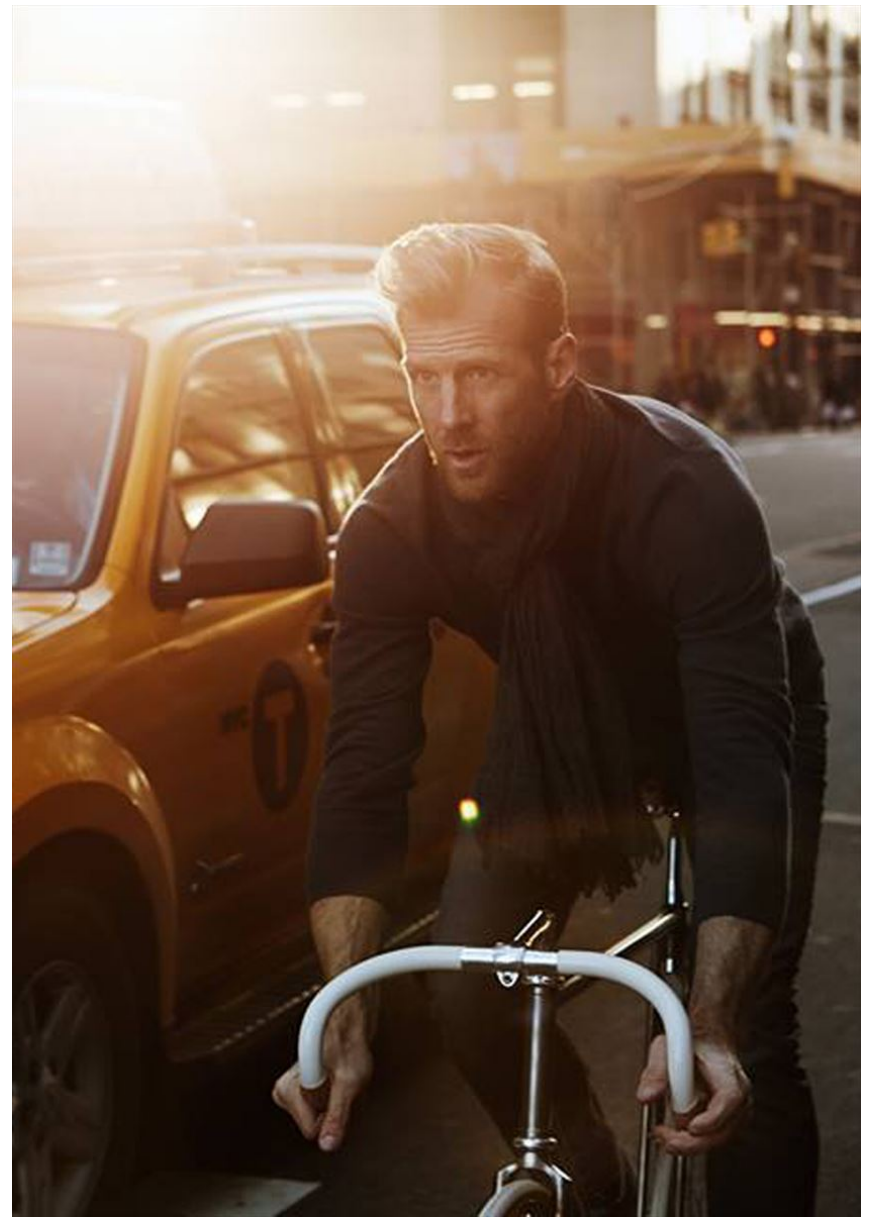
MICHAEL R. KERSCHBAUMER

GRÖSSE **185** OBERWEITE **100**
TAILLE **84** HÜFTE **99**
SCHUHE **45** HAARE **BLOND**
AUGEN **BLAU**

M
MODELS

HEIGHT **6' 1"** BUST **39"**
WAIST **33"** HIPS **39"**
SHOES **12** HAIR **BLONDE**
EYES **BLUE**

Hamburg +49 40 413 236 - 0 Berlin +49 30 616 606 - 6
www.m4models.de



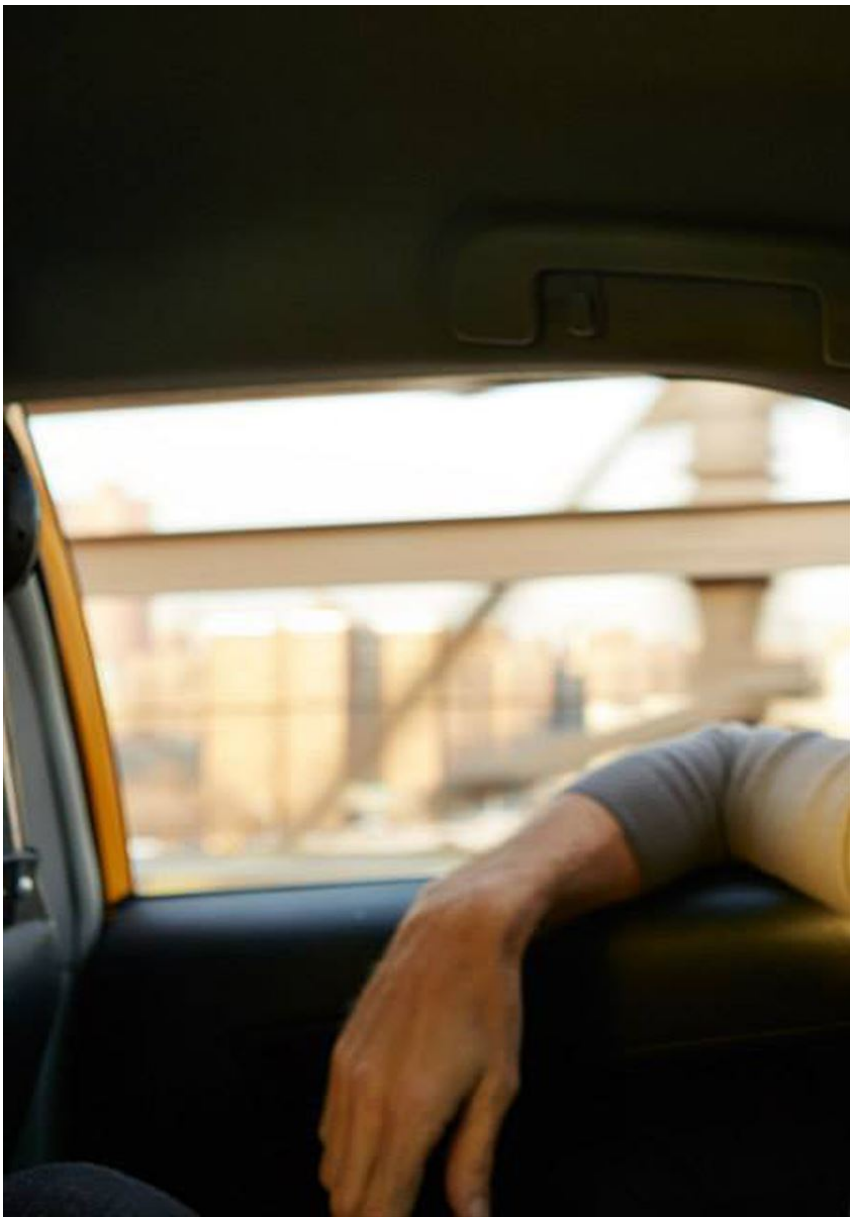
MICHAEL R. KERSCHBAUMER

GRÖSSE **185** OBERWEITE **100**
TAILLE **84** HÜFTE **99**
SCHUHE **45** HAARE **BLOND**
AUGEN **BLAU**

M
MODELS

Hamburg +49 40 413 236 - 0 Berlin +49 30 616 606 - 6
www.m4models.de

HEIGHT **6' 1"** BUST **39"**
WAIST **33"** HIPS **39"**
SHOES **12** HAIR **BLONDE**
EYES **BLUE**



MICHAEL R. KERSCHBAUMER

GRÖSSE **185** OBERWEITE **100**
TAILLE **84** HÜFTE **99**
SCHUHE **45** HAARE **BLOND**
AUGEN **BLAU**



Hamburg +49 40 413 236 - 0 Berlin +49 30 616 606 - 6
www.m4models.de

HEIGHT **6' 1"** BUST **39"**
WAIST **33"** HIPS **39"**
SHOES **12** HAIR **BLONDE**
EYES **BLUE**



MICHAEL R. KERSCHBAUMER

GRÖSSE **185** OBERWEITE **100**
TAILLE **84** HÜFTE **99**
SCHUHE **45** HAARE **BLOND**
AUGEN **BLAU**



Hamburg +49 40 413 236 - 0 Berlin +49 30 616 606 - 6
www.m4models.de

HEIGHT **6' 1"** BUST **39"**
WAIST **33"** HIPS **39"**
SHOES **12** HAIR **BLONDE**
EYES **BLUE**



MICHAEL R. KERSCHBAUMER

GRÖSSE **185** OBERWEITE **100**
TAILLE **84** HÜFTE **99**
SCHUHE **45** HAARE **BLOND**
AUGEN **BLAU**



Hamburg +49 40 413 236 - 0 Berlin +49 30 616 606 - 6
www.m4models.de

HEIGHT **6' 1"** BUST **39"**
WAIST **33"** HIPS **39"**
SHOES **12** HAIR **BLONDE**
EYES **BLUE**



*Some come here to sit and think and make some judgement calls,
but I come here to spread some ink and write upon the walls.*

MICHAEL R. KERSCHBAUMER

GRÖSSE **185** OBERWEITE **100**
TAILLE **84** HÜFTE **99**
SCHUHE **45** HAARE **BLOND**
AUGEN **BLAU**



Hamburg +49 40 413 236 - 0 Berlin +49 30 616 606 - 6
www.m4models.de

HEIGHT **6' 1"** BUST **39"**
WAIST **33"** HIPS **39"**
SHOES **12** HAIR **BLONDE**
EYES **BLUE**



MICHAEL R. KERSCHBAUMER

GRÖSSE **185** OBERWEITE **100**
TAILLE **84** HÜFTE **99**
SCHUHE **45** HAARE **BLOND**
AUGEN **BLAU**

M
MODELS

HEIGHT **6' 1"** BUST **39"**
WAIST **33"** HIPS **39"**
SHOES **12** HAIR **BLONDE**
EYES **BLUE**

Hamburg +49 40 413 236 - 0 Berlin +49 30 616 606 - 6
www.m4models.de



CORNER OF BROADWAY AND PINE STREET



V-NECK SWEATER, WOOL SCARF



GANT EYEWEAR, MADISON UMBRELLA



AND GANT SHOES

31



GANT IVY LEAGUE

FALL/WINTER COLLECTION

45

MICHAEL R. KERSCHBAUMER

GRÖSSE **185** OBERWEITE **100**
TAILLE **84** HÜFTE **99**
SCHUHE **45** HAARE **BLOND**
AUGEN **BLAU**



Hamburg +49 40 413 236 - 0 Berlin +49 30 616 606 - 6
www.m4models.de

HEIGHT **6' 1"** BUST **39"**
WAIST **33"** HIPS **39"**
SHOES **12** HAIR **BLONDE**
EYES **BLUE**



MICHAEL R. KERSCHBAUMER

GRÖSSE **185** OBERWEITE **100**
TAILLE **84** HÜFTE **99**
SCHUHE **45** HAARE **BLOND**
AUGEN **BLAU**



Hamburg +49 40 413 236 - 0 Berlin +49 30 616 606 - 6
www.m4models.de

HEIGHT **6' 1"** BUST **39"**
WAIST **33"** HIPS **39"**
SHOES **12** HAIR **BLONDE**
EYES **BLUE**



The MA-1, a nylon-covered variation on the standard-issue bomber jacket, was a favorite of the Navy and Marine Corps for its amazing ability to repel water. Even the "high-and-dry" Air Force guys who flew this C-130 transport, though, would have appreciated the versatile, all-weather style of this neo-MA-1-like Andrew Marc jacket, with its specially oiled and waxed leather shell and detachable bubble lining and coyote fur-lined hood.

Keenan espresso puffy leather jacket, \$199, by Andrew Marc; Khaki open weave lambswool sweater, \$180, by John Varvatos; Green cargo pants, \$206, by Gilded Age; Brown buckled belt, \$95, by Belstaff; Brown lace-up boots, \$150, by Harris of London; Cobalt brown aviator sunglasses, \$922, by Sama.



Few people realize that the earliest bomber jackets often lacked pockets (the Army didn't want officers loitering around looking lazy). Eventually, of course, the slouch, hands-in-pockets slouch was all part of the point. Now, C.P. Company continues the evolution by offering a pair of oversized front pockets in its newest design — with ample space for your cell phone, PDA or whatever other gadgetry heat you're packing, and that slouch.

Black leather bomber jacket, \$1,430, by C.P. Company; Gray Scott wool sweater with pockets, \$329, by Hewke & Co.; Denim jeans, \$395, by Gilded Age; Black lace-up boots, \$2,315, by John Lobb.

MICHAEL R. KERSCHBAUMER

GRÖSSE **185** OBERWEITE **100**
 TAILLE **84** HÜFTE **99**
 SCHUHE **45** HAARE **BLOND**
 AUGEN **BLAU**



HEIGHT **6' 1"** BUST **39"**
 WAIST **33"** HIPS **39"**
 SHOES **12** HAIR **BLONDE**
 EYES **BLUE**

Hamburg +49 40 413 236 - 0 Berlin +49 30 616 606 - 6
www.m4models.de



MICHAEL R. KERSCHBAUMER

GRÖSSE **185** OBERWEITE **100**
TAILLE **84** HÜFTE **99**
SCHUHE **45** HAARE **BLOND**
AUGEN **BLAU**



Hamburg +49 40 413 236 - 0 Berlin +49 30 616 606 - 6
www.m4models.de

HEIGHT **6' 1"** BUST **39"**
WAIST **33"** HIPS **39"**
SHOES **12** HAIR **BLONDE**
EYES **BLUE**



MICHAEL R. KERSCHBAUMER

GRÖSSE **185** OBERWEITE **100**
TAILLE **84** HÜFTE **99**
SCHUHE **45** HAARE **BLOND**
AUGEN **BLAU**



Hamburg +49 40 413 236 - 0 Berlin +49 30 616 606 - 6
www.m4models.de

HEIGHT **6' 1"** BUST **39"**
WAIST **33"** HIPS **39"**
SHOES **12** HAIR **BLONDE**
EYES **BLUE**



MICHAEL R. KERSCHBAUMER

GRÖSSE **185** OBERWEITE **100**
TAILLE **84** HÜFTE **99**
SCHUHE **45** HAARE **BLOND**
AUGEN **BLAU**



Hamburg +49 40 413 236 - 0 Berlin +49 30 616 606 - 6
www.m4models.de

HEIGHT **6' 1"** BUST **39"**
WAIST **33"** HIPS **39"**
SHOES **12** HAIR **BLONDE**
EYES **BLUE**



MICHAEL R. KERSCHBAUMER

GRÖSSE **185** OBERWEITE **100**
TAILLE **84** HÜFTE **99**
SCHUHE **45** HAARE **BLOND**
AUGEN **BLAU**



Hamburg +49 40 413 236 - 0 Berlin +49 30 616 606 - 6
www.m4models.de

HEIGHT **6' 1"** BUST **39"**
WAIST **33"** HIPS **39"**
SHOES **12** HAIR **BLONDE**
EYES **BLUE**



MICHAEL R. KERSCHBAUMER

GRÖSSE **185** OBERWEITE **100**
TAILLE **84** HÜFTE **99**
SCHUHE **45** HAARE **BLOND**
AUGEN **BLAU**



Hamburg +49 40 413 236 - 0 Berlin +49 30 616 606 - 6
www.m4models.de

HEIGHT **6' 1"** BUST **39"**
WAIST **33"** HIPS **39"**
SHOES **12** HAIR **BLONDE**
EYES **BLUE**