



Krata zobowiązuje

Niegdzielniejsza w świecie mody mała czarna, czerwona i biała pasy na klatce, a białe kawy z mlekiem. Wzór opiewany przez lorda Thomasa Burberry'ego przy Winchester Street w Bathingale ponad sto lat temu. Amundsen szedł w ślad luncze na Biegun Południowy, a sir Mallory na Everest. Krata ma znaczenie. Krata – szlachcka krata, krata wyznaczyła przynależność do klanu. Krata miała organiczne barwy z klanu, klanu i klanu. Działajcie się. Krata – modźnik nad ich legalnym używaniem sprawuje. Krata – Lord Lyon King of Arms – herald Szkoła. Naszenie krata ko szlachelny przywilej. Krata oblige. Nawet w polu.

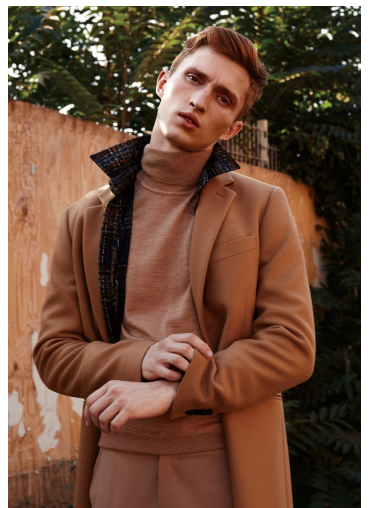
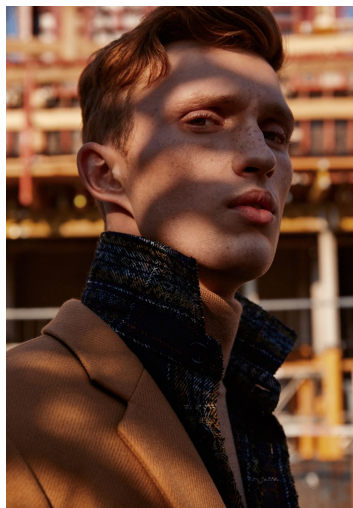
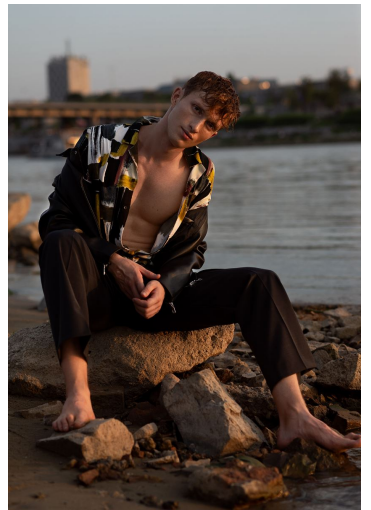
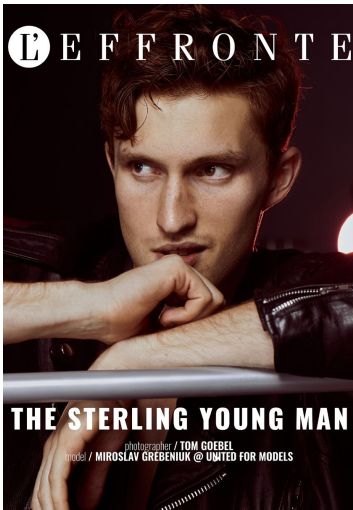
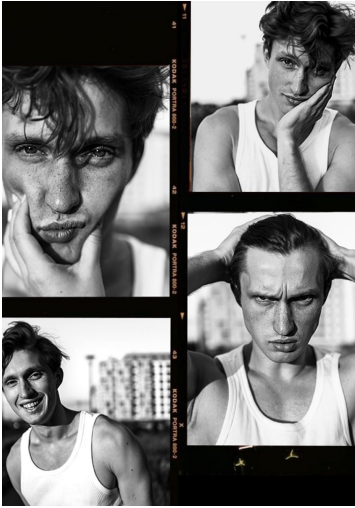
© 2014 M4 MODELS. ALL RIGHTS RESERVED. PHOTO: MARTIN BEFLER.

MYROSLAV

GRÖSSE **188** OBERWEITE **96**
TAILLE **77** HÜFTE **95**
SCHUHE **43** HAARE **ROT**
AUGEN **BRAUN**



HEIGHT **6' 2"** BUST **38"**
WAIST **30"** HIPS **38"**
SHOES **10** HAIR **RED**
EYES **BROWN**

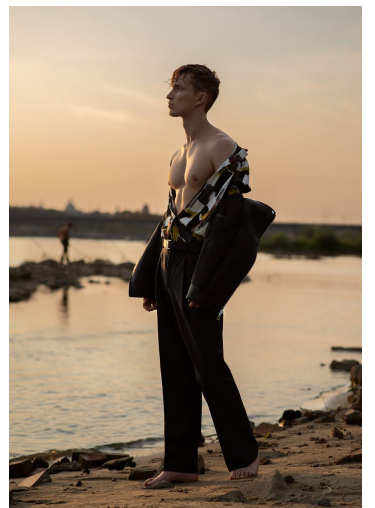
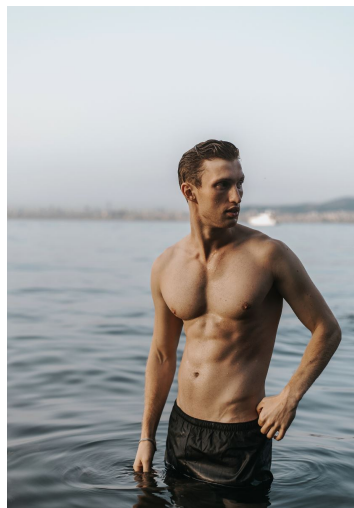


MYROSLAV

GRÖSSE **188** OBERWEITE **96**
TAILLE **77** HÜFTE **95**
SCHUHE **43** HAARE **ROT**
AUGEN **BRAUN**

M4
MODELS

HEIGHT **6' 2"** BUST **38"**
WAIST **30"** HIPS **38"**
SHOES **10** HAIR **RED**
EYES **BROWN**

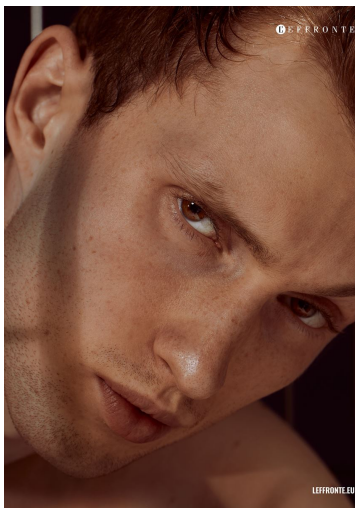
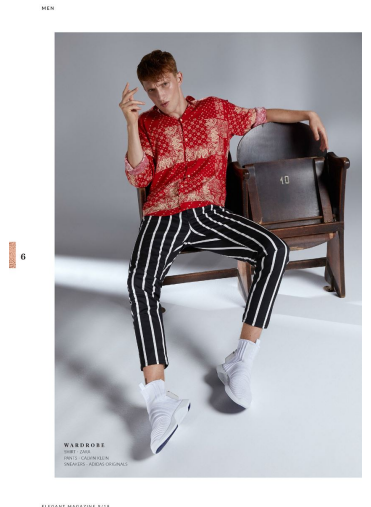
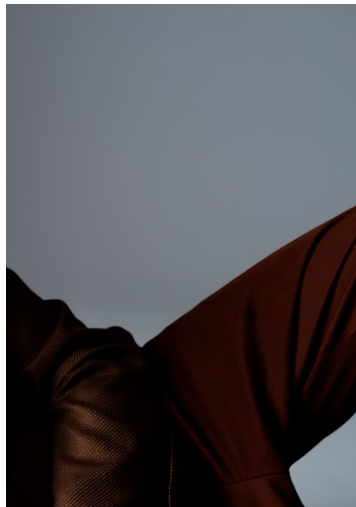
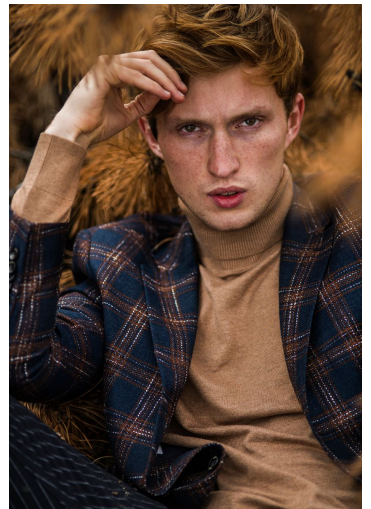
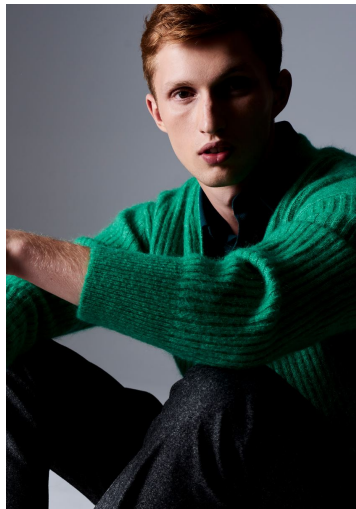


MYROSLAV

GRÖSSE **188** OBERWEITE **96**
TAILLE **77** HÜFTE **95**
SCHUHE **43** HAARE **ROT**
AUGEN **BRAUN**



HEIGHT **6' 2"** BUST **38"**
WAIST **30"** HIPS **38"**
SHOES **10** HAIR **RED**
EYES **BROWN**



MYROSLAV

GRÖSSE **188** OBERWEITE **96**
TAILLE **77** HÜFTE **95**
SCHUHE **43** HAARE **ROT**
AUGEN **BRAUN**

M4
MODELS

HEIGHT **6' 2"** BUST **38"**
WAIST **30"** HIPS **38"**
SHOES **10** HAIR **RED**
EYES **BROWN**