



## COLE FRANKS

GRÖSSE **186** OBERWEITE **96**  
TAILLE **76** HÜFTE **95**  
SCHUHE **45** HAARE **BRAUN**  
AUGEN **BLAU**

**M4**  
MODELS

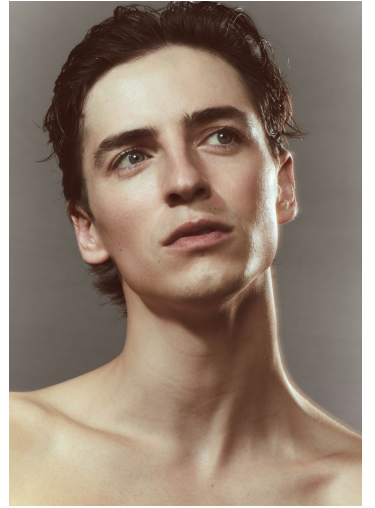
HEIGHT **6' 1"** BUST **38"**  
WAIST **30"** HIPS **38"**  
SHOES **11.5** HAIR **BROWN**  
EYES **BLUE**



Doppopetto  
 e pantalone in  
 tessuto di lana  
 colorato. Camicia  
 classica. Aghi  
 Martini, Nona GL,  
 Pignone occhio,  
 e bottoni  
 Martini.  
 Max & Co.  
 Pantaloni  
 Balotraglia,  
 Giacobbe,  
 Admine. A chiave  
 doppiopetto e  
 bottoni in ottone  
 alla francese.  
 Max & Co.  
 Occhiali, Gucci  
 Occhiali,  
 Brunetta,  
 Brunetta,  
 Sottini, La Villa.



Abito in gresù  
 light e in di  
 Seta. Cricotto  
 1991, Canino,  
 1991, Calibus,  
 Cricotto,  
 Bonifido Hata,  
 Cricotto,  
 Vallerende.  
 Pantalone occhio,  
 e bottoni  
 completo in  
 gresù occhio.  
 Cricotto 1991,  
 Canino, Seta,  
 Cricotto,  
 E. Martiniella,  
 Cricotto,  
 Diorif. A  
 chiave occhio in  
 gresù. Cricotto  
 1991, Canino,  
 Hermes, Scarp,  
 Martiniella.



Calvin Klein



Calvin Klein



Cricotto  
 doppiopetto  
 in gresù  
 riciccolato. Pigiama  
 e pantaloni in  
 gresù e cotone.  
 Diorif.

Nella pagina a fianco:  
 giletto in gresù  
 in lana e seta  
 Pina Pina  
 occhio in gresù  
 occhio in gresù  
 occhio in gresù  
 occhio in gresù



Pantaloni in seta  
 (pigiama), occhio  
 in gresù e cotone.  
 Diorif. Cricotto  
 Hata e Martiniella.

Nella pagina a fianco:  
 doppiopetto in gresù  
 con bottoni in ottone,  
 occhio in gresù  
 con occhio, pantaloni  
 in gresù e cotone.  
 Aghi e bottoni,  
 Giacobbe.



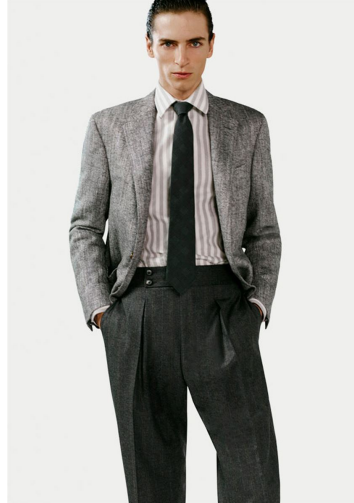
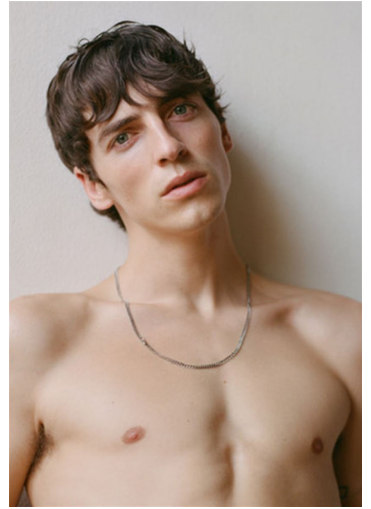
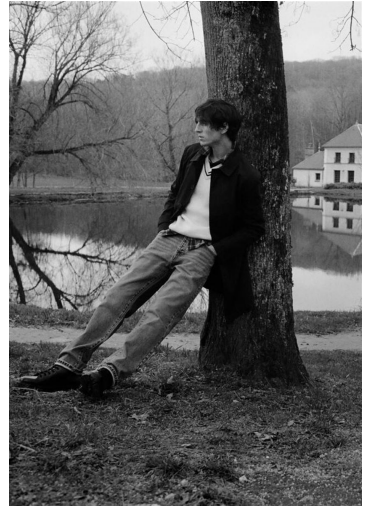
# COLE FRANKS

GRÖSSE 186 OBERWEITE 96  
 TAILLE 76 HÜFTE 95  
 SCHUHE 45 HAARE BRAUN  
 AUGEN BLAU

**M4**  
 MODELS

HEIGHT 6' 1" BUST 38"  
 WAIST 30" HIPS 38"  
 SHOES 11.5 HAIR BROWN  
 EYES BLUE





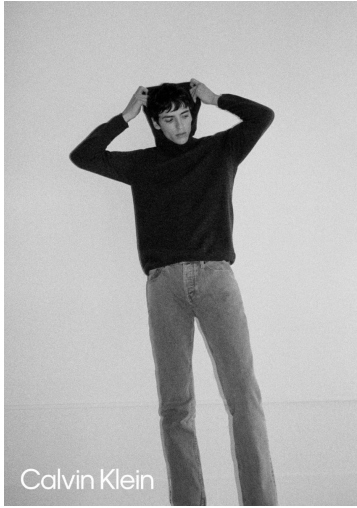
# COLE FRANKS

GRÖSSE 186 OBERWEITE 96  
TAILLE 76 HÜFTE 95  
SCHUHE 45 HAARE BRAUN  
AUGEN BLAU

**M4**  
MODELS

HEIGHT 6' 1" BUST 38"  
WAIST 30" HIPS 38"  
SHOES 11.5 HAIR BROWN  
EYES BLUE

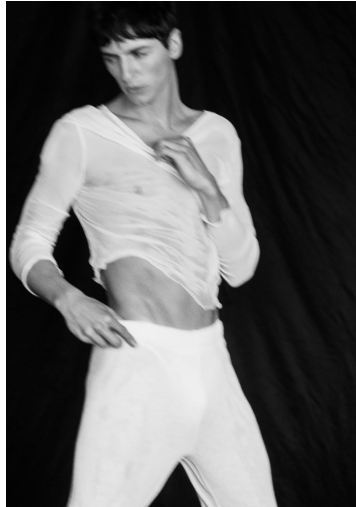
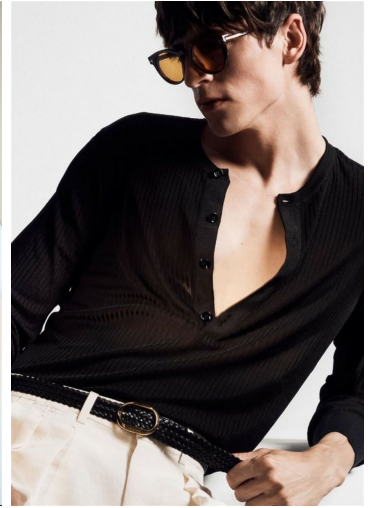




Calvin Klein



Calvin Klein



## COLE FRANKS

GRÖSSE **186** OBERWEITE **96**  
TAILLE **76** HÜFTE **95**  
SCHUHE **45** HAARE **BRAUN**  
AUGEN **BLAU**

**M4**  
MODELS

HEIGHT **6' 1"** BUST **38"**  
WAIST **30"** HIPS **38"**  
SHOES **11.5** HAIR **BROWN**  
EYES **BLUE**