

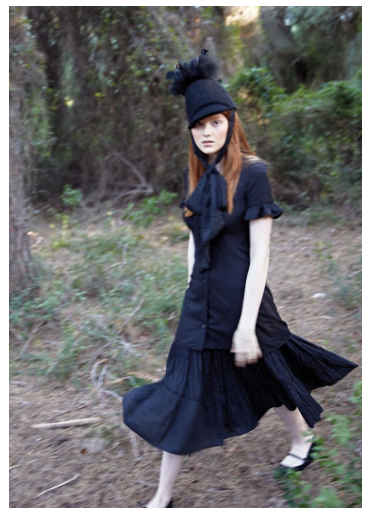
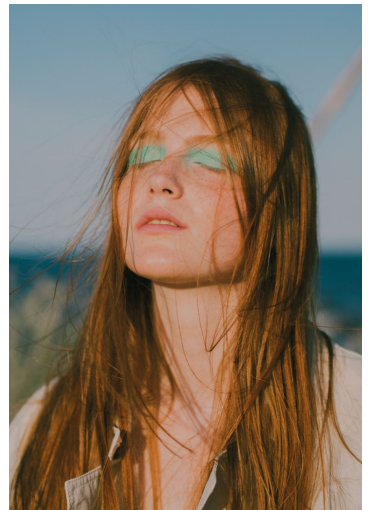


LUCIA PONS

GRÖSSE **175** OBERWEITE **85**
 TAILLE **66** HÜFTE **88**
 SCHUHE **39** HAARE **ROT**
 AUGEN **BLAU-GRÜN**

M4
 MODELS

HEIGHT **5' 9"** BUST **33"**
 WAIST **26"** HIPS **35"**
 SHOES **7.5** HAIR **RED**
 EYES **BLUE-GREEN**



LUCIA PONS

GRÖSSE 175 OBERWEITE 85
TAILLE 66 HÜFTE 88
SCHUHE 39 HAARE ROT
AUGEN BLAU-GRÜN



HEIGHT 5' 9" BUST 33"
WAIST 26" HIPS 35"
SHOES 7.5 HAIR RED
EYES BLUE-GREEN



Dress: 404 Studio



Dress: Booomely
Bear: Carolina Herrera
Earrings: Booomely

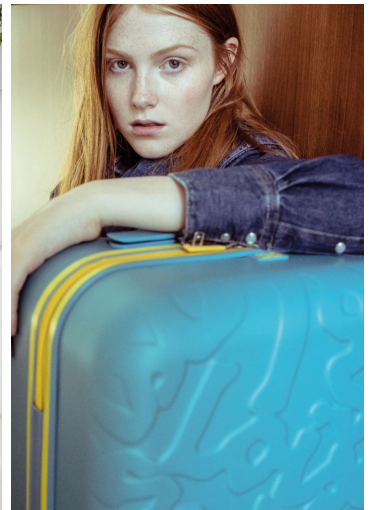
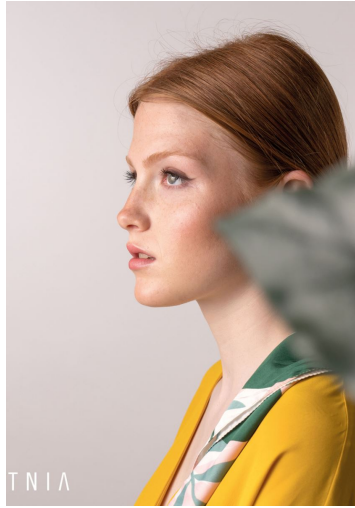


LUCIA PONS

GRÖSSE 175 OBERWEITE 85
TAILLE 66 HÜFTE 88
SCHUHE 39 HAARE ROT
AUGEN BLAU-GRÜN

M4
MODELS

HEIGHT 5' 9" BUST 33"
WAIST 26" HIPS 35"
SHOES 7.5 HAIR RED
EYES BLUE-GREEN



LUCIA PONS

GRÖSSE 175 OBERWEITE 85
TAILLE 66 HÜFTE 88
SCHUHE 39 HAARE ROT
AUGEN BLAU-GRÜN



HEIGHT 5' 9" BUST 33"
WAIST 26" HIPS 35"
SHOES 7.5 HAIR RED
EYES BLUE-GREEN