

## KOTRYNA B

GRÖSSE **177** OBERWEITE **82**  
TAILLE **62** HÜFTE **90**  
SCHUHE **41** HAARE **ROT-BRAUN**  
AUGEN **BLAU-GRÜN**

**M4**  
MODELS

HEIGHT **5' 9.5"** BUST **32"**  
WAIST **24"** HIPS **35"**  
SHOES **10** HAIR **AUBURN**  
EYES **BLUE-GREEN**



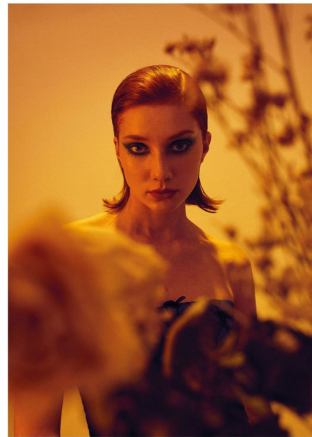
**PRADA**  
WALLETS



ISO 1600 1/125 s f/10 24 mm 210702\_Codamenta40900-CR2 (2)



Jacket: Guillem Rodriguez  
Top/dress: By Sophie  
Shoes: Valentino



Top/dress: By Sophie

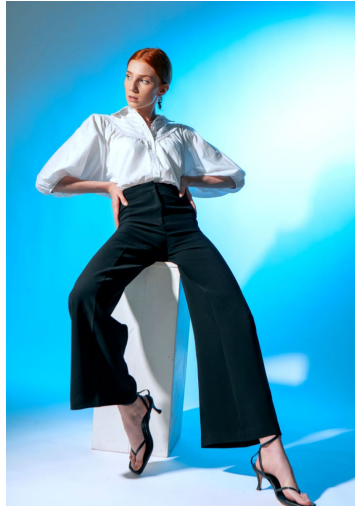


# KOTRYNA B

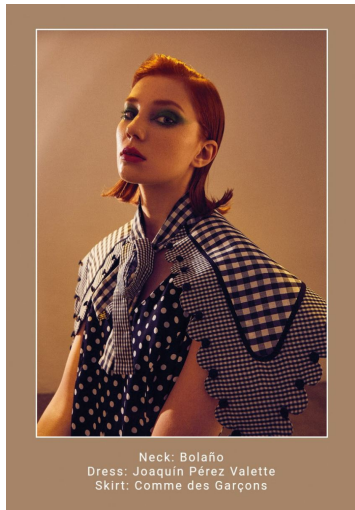
GRÖSSE **177** OBERWEITE **82**  
TAILLE **62** HÜFTE **90**  
SCHUHE **41** HAARE **ROT-BRAUN**  
AUGEN **BLAU-GRÜN**



HEIGHT **5' 9.5"** BUST **32"**  
WAIST **24"** HIPS **35"**  
SHOES **10** HAIR **AUBURN**  
EYES **BLUE-GREEN**



Dress: Joaquín Pérez Valette  
Skirt: Comme des Garçons



Neck: Bolaño  
Dress: Joaquín Pérez Valette  
Skirt: Comme des Garçons

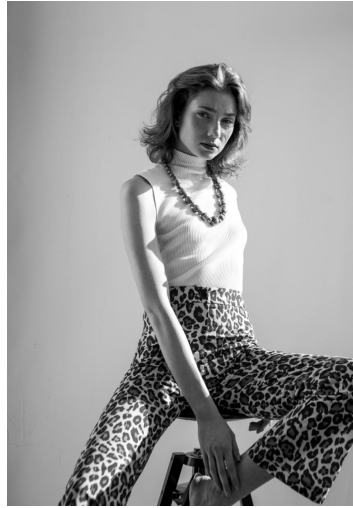


## KOTRYNA B

GRÖSSE 177 OBERWEITE 82  
TAILLE 62 HÜFTE 90  
SCHUHE 41 HAARE ROT-BRAUN  
AUGEN BLAU-GRÜN

**M4**  
MODELS

HEIGHT 5' 9.5" BUST 32"  
WAIST 24" HIPS 35"  
SHOES 10 HAIR AUBURN  
EYES BLUE-GREEN



## KOTRYNA B

GRÖSSE **177** OBERWEITE **82**  
TAILLE **62** HÜFTE **90**  
SCHUHE **41** HAARE **ROT-BRAUN**  
AUGEN **BLAU-GRÜN**

**M4**  
MODELS

HEIGHT **5' 9.5"** BUST **32"**  
WAIST **24"** HIPS **35"**  
SHOES **10** HAIR **AUBURN**  
EYES **BLUE-GREEN**