

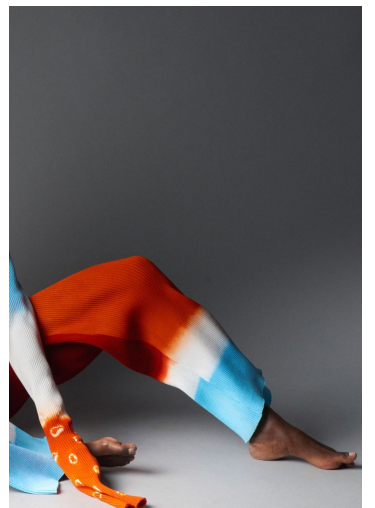
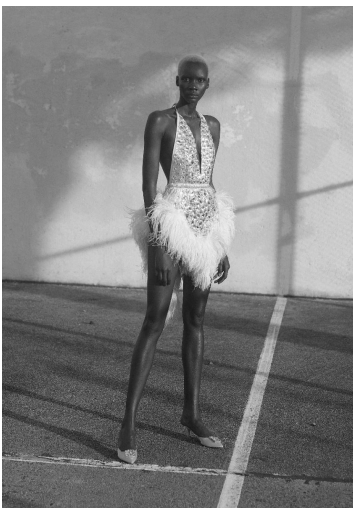
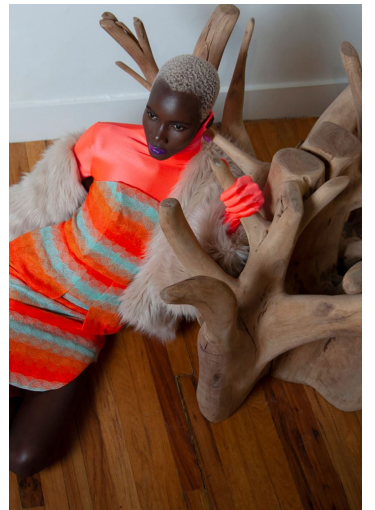
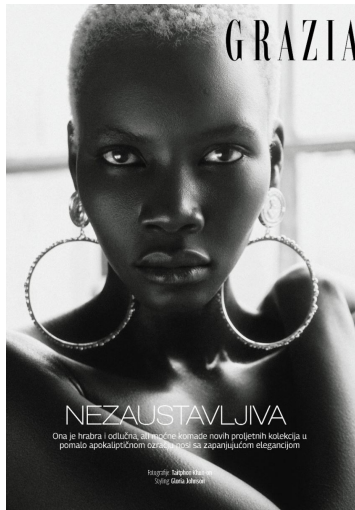
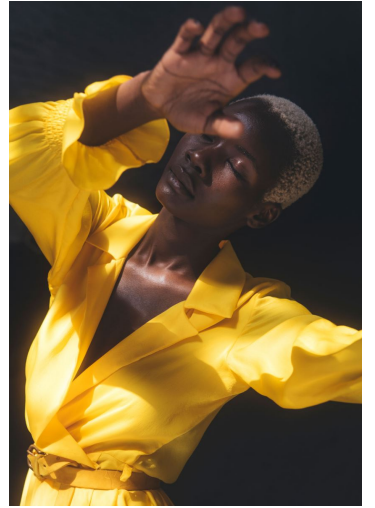
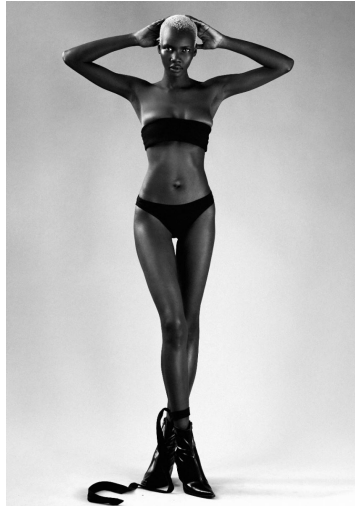


TRICIA AKELLO

GRÖSSE **180** OBERWEITE **86**
 TAILLE **61** HÜFTE **88**
 SCHUHE **41** HAARE **SCHWARZ**
 AUGEN **BRAUN**



HEIGHT **5' 11"** BUST **34"**
 WAIST **24"** HIPS **35"**
 SHOES **9.5** HAIR **BLACK**
 EYES **BROWN**



TRICIA AKELLO

GRÖSSE **180** OBERWEITE **86**
TAILLE **61** HÜFTE **88**
SCHUHE **41** HAARE **SCHWARZ**
AUGEN **BRAUN**



HEIGHT **5' 11"** BUST **34"**
WAIST **24"** HIPS **35"**
SHOES **9.5** HAIR **BLACK**
EYES **BROWN**

FASHION EDITORS LIEBEN: SCHIMMER. Mit derben Boots statt feinen Pumps wirkt ein bisschen Glanz im Office genauso angemessen wie beim Model-Fitting.



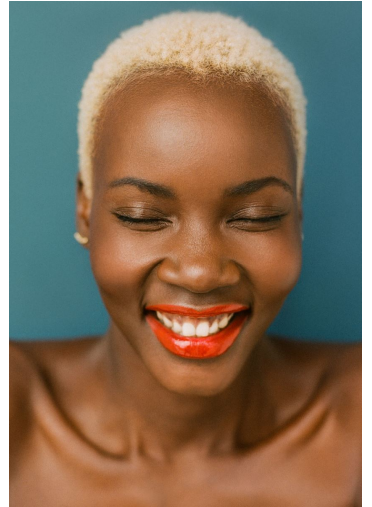
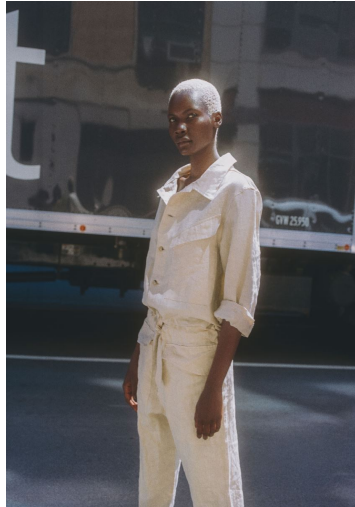
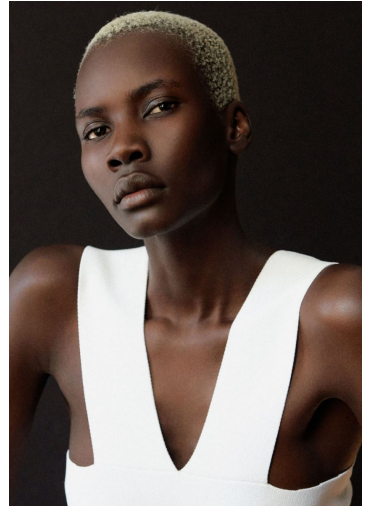
Shine
Wollrocken und Lederhosen. Entwurf aus Straßenszene-ästhetik. Regenmantel, also von Giorgio Armani

MODELS LIEBEN: CHUNKY KNITS, weil bunter Strick im Mix mit Leder das perfekte Boho-Outlet fürs Casting ist

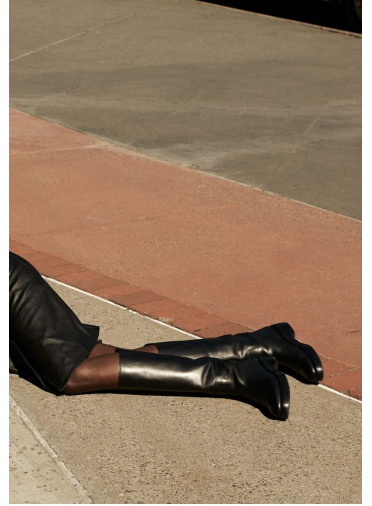


#StilleWalden

Links: Car Bgan aus Polster-Wolle, darunter: Wangenmanns Tweed-Etuis von 1973. Die Stripes: Miu Miu. Boden-Hänge: Celine. Das: Einzigartige von Anna Dittler. Auch aus: Miroslawa, von 2011. Celine von 2011. Miu Miu. Boden-Hänge: Kore Jodan. Rechts: Umarmungsplüsch aus Wolle von H&M. 18-Meter von 123. Doreen Pflanz



#thenowsquad
#bystevenklein

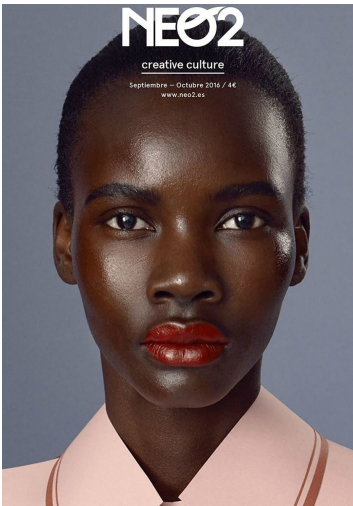
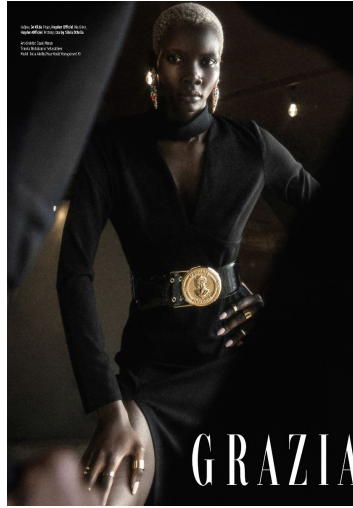
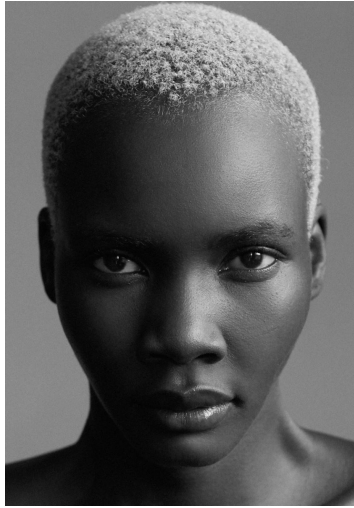


TRICIA AKELLO

GRÖSSE **180** OBERWEITE **86**
 TAILLE **61** HÜFTE **88**
 SCHUHE **41** HAARE **SCHWARZ**
 AUGEN **BRAUN**



HEIGHT **5' 11"** BUST **34"**
 WAIST **24"** HIPS **35"**
 SHOES **9.5** HAIR **BLACK**
 EYES **BROWN**



TRICIA AKELLO

GRÖSSE **180** OBERWEITE **86**
TAILLE **61** HÜFTE **88**
SCHUHE **41** HAARE **SCHWARZ**
AUGEN **BRAUN**

M4
MODELS

HEIGHT **5' 11"** BUST **34"**
WAIST **24"** HIPS **35"**
SHOES **9.5** HAIR **BLACK**
EYES **BROWN**