



ABBY

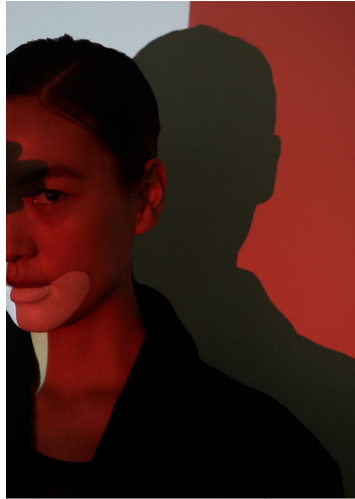
GRÖSSE **177** OBERWEITE **80**
TAILLE **61** HÜFTE **88**
SCHUHE **39** HAARE **SCHWARZ**
AUGEN **SCHWARZ**

M4
MODELS

HEIGHT **5' 9.5"** BUST **31"**
WAIST **24"** HIPS **35"**
SHOES **7.5** HAIR **BLACK**
EYES **BLACK**



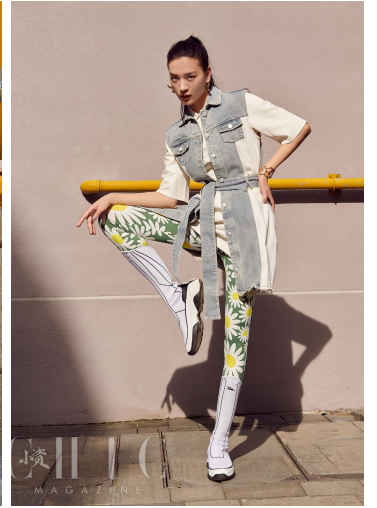
She wears her beautiful dresses only at home. For this she can wear the costumes of people by mistake, wear them for unexpected days like here. But behind this it has been put together by a dreamer... she found that it was here, inside these areas where she made her living place.



Tout - Fondation Yves Saint Laurent All Hours Encre de Paris, Lipa - MAC PAINTSTICK X 12 PALETTE



小资
MAGAZINE



小资
MAGAZINE

Lip - GOURMET, ANI, Poudre, Cils, Goggles, "Vibes", "SAD", "Beauty, Makeup, Teeth, Foundation, Nail, Skin, Lipstick, All Hours, Effects on the Skin, Lip - MAC PAINTSTICK X 12 PALETTE, Brown - ANASTASIA BEVERLY HILLS Eyebrow Pomade Duo



2. Unlike other dresses of the time, some of which were cylindrical gowns to house a corset, this dress clung to the contours of her body and placed, like the edges of her body, allowed for her clothes to be enjoyed as flesh.



ABBY

GRÖSSE **177** OBERWEITE **80**
 TAILLE **61** HÜFTE **88**
 SCHUHE **39** HAARE **SCHWARZ**
 AUGEN **SCHWARZ**

M4
 MODELS

HEIGHT **5' 9.5"** BUST **31"**
 WAIST **24"** HIPS **35"**
 SHOES **7.5** HAIR **BLACK**
 EYES **BLACK**