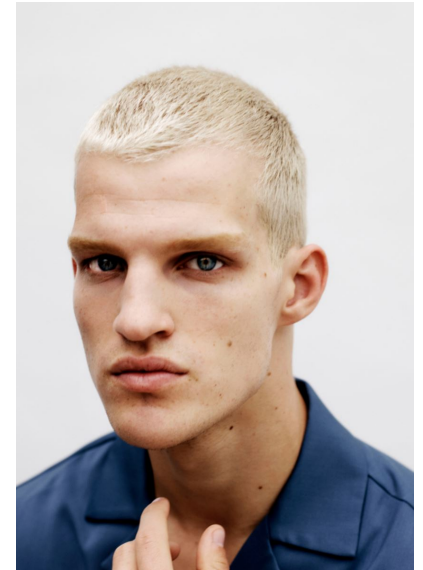




MATTEO FERRI



DRY A -> Abstrak short sleeve shirt, plaided skirt, long sleeve hooded jacket, leather combat boots, boots



MATTEO FERRI

GRÖSSE 190 OBERWEITE 96  
TAILLE 81 HÜFTE 96  
SCHUHE 44 HAARE DUNKELBLOND  
AUGEN BLAU

HEIGHT 6' 2.5" BUST 38"  
WAIST 32" HIPS 38"  
SHOES 10.5 HAIR DARK BLONDE  
EYES BLUE